

## Anti-MISP Antibody Picoband™

Catalog Number: A08017-1

### About MISP

The protein encoded by this gene is an actin-bundling protein involved in determining cell morphology and mitotic progression. The encoded protein is required for the proper positioning of the mitotic spindle. Two transcript variants, one protein-coding and the other non-protein coding, have been found for this gene.

### Overview

Product Name	Anti-MISP Antibody Picoband™
Reactive Species	Human
Description	Boster Bio Anti-MISP Antibody Picoband™ catalog # A08017-1. Tested in ELISA, IF, ICC, WB, Flow Cytometry applications. This antibody reacts with Human.
Application	ELISA, Flow Cytometry, IF, ICC, WB
Clonality	Polyclonal
Formulation	Each vial contains 4 mg Trehalose, 0.9 mg NaCl, 0.2 mg Na <sub>2</sub> HPO <sub>4</sub> .
Storage Instructions	At -20°C for one year from date of receipt. After reconstitution, at 4°C for one month. It can also be aliquotted and stored frozen at -20°C for six months. Avoid repeated freezing and thawing.
Host	Rabbit
Uniprot ID	Q8IVT2

### Technical Details

Immunogen	E.coli-derived human MISP recombinant protein (Position: M1-R632).
Recommended Detection Systems	Boster recommends Enhanced Chemiluminescent Kit with anti-Rabbit IgG (EK1002) for Western blot, and HRP Conjugated anti-Rabbit IgG Super Vision Assay Kit (SV0002-1) for ICC.
Cross Reactivity	No cross-reactivity with other proteins.
Isotype	Rabbit IgG
Form	Lyophilized
Concentration	Adding 0.2 ml of distilled water will yield a concentration of 500 µg/ml.
Purification	Immunogen affinity purified.
Suggested Dilutions	Dilute the sample so that the expected range of concentrations fall within the detection range of this kit.

If the expected range of concentration is unknown, a pilot test should be conducted to decide the optimal dilution ratio for your samples.

Some PubMed article(s) citing the expression level of this target are as follows:

Boster Bio's internal QC testing used:

Western blot, 0.25-0.5 µg/ml, Human

Immunocytochemistry/Immunofluorescence, 5 µg/ml, Human

Flow Cytometry (Fixed), 1-3 µg/1x10<sup>6</sup> cells, Human

ELISA, 0.1-0.5 µg/ml, Human

## Anti-MISP Antibody Picoband™ (A08017-1) Images

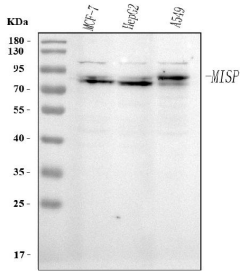


Figure 1. Western blot analysis of MISP using anti-MISP antibody (A08017-1).

Electrophoresis was performed on a 5-20% SDS-PAGE gel at 70V (Stacking gel) / 90V (Resolving gel) for 2-3 hours. The sample well of each lane was loaded with 30 ug of sample under reducing conditions.

Lane 1: human MCF-7 whole cell lysates,

Lane 2: human HepG2 whole cell lysates,

Lane 3: human A549 whole cell lysates.

After electrophoresis, proteins were transferred to a nitrocellulose membrane at 150 mA for 50-90 minutes. Blocked the membrane with 5% non-fat milk/TBS for 1.5 hour at RT. The membrane was incubated with rabbit anti-MISP antigen affinity purified polyclonal antibody (Catalog # A08017-1) at 0.5 ug/mL overnight at 4°C, then washed with TBS-0.1%Tween 3 times with 5 minutes each and probed with a goat anti-rabbit IgG-HRP secondary antibody at a dilution of 1:5000 for 1.5 hour at RT. The signal is developed using an Enhanced Chemiluminescent detection (ECL) kit (Catalog # EK1002) with Tanon 5200 system. A specific band was detected for MISP at approximately 75 kDa. The expected band size for MISP is at 75 kDa.

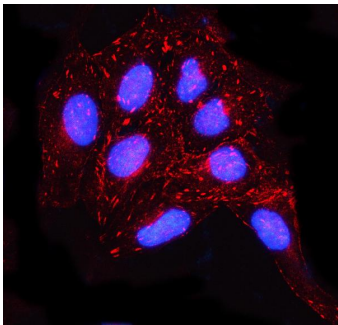


Figure 2. IF analysis of MISP using anti-MISP antibody (A08017-1).

MISP was detected in an immunocytochemical section of U2OS cells. Enzyme antigen retrieval was performed using IHC enzyme antigen retrieval reagent (AR0022) for 15 mins. The cells were blocked with 10% goat serum. And then incubated with 5 ug/mL rabbit anti-MISP Antibody (A08017-1) overnight at 4°C. Cy3 Conjugated Goat Anti-Rabbit IgG (BA1032) was used as secondary antibody at 1:500 dilution and incubated for 30 minutes at 37°C. The section was counterstained with DAPI. Visualize using a fluorescence microscope and filter sets appropriate for the label used.

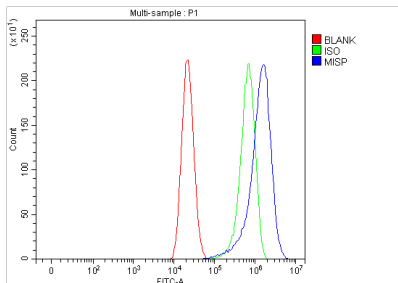


Figure 3. Flow Cytometry analysis of Caco-2 cells using anti-MISP antibody (A08017-1).

Overlay histogram showing Caco-2 cells stained with A08017-1 (Blue line). To facilitate intracellular staining, cells were fixed with 4% paraformaldehyde and permeabilized with permeabilization buffer. The cells were blocked with 10% normal goat serum. And then incubated with rabbit anti-MISP Antibody (A08017-1, 1 ug/1x10<sup>6</sup> cells) for 30 min at 20°C. DyLight®488 conjugated goat anti-rabbit IgG (BA1127, 5-10 ug/1x10<sup>6</sup> cells) was used as secondary antibody for 30 minutes at 20°C. Isotype control antibody (Green line) was rabbit IgG (1 ug/1x10<sup>6</sup>) used under the same conditions. Unlabelled sample (Red line) was also used as a control.

## Submit a product review to Biocompare.com

Submit a review of this product to Biocompare.com to receive a \$20 Amazon.com giftcard! Your reviews help your fellow scientists make the right decisions. Thank you for your contribution.



Anti-MISP Antibody