

## Anti-ERLIN1/2 Antibody

Catalog Number: A08034-1

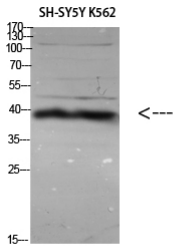
### Overview

Product Name	Anti-ERLIN1/2 Antibody
Reactive Species	Human, Mouse, Rat
Description	Boster Bio Anti-ERLIN1/2 Antibody catalog # A08034-1. Tested in IHC, WB applications. This antibody reacts with Human, Mouse, Rat.
Application	IHC, WB
Clonality	Polyclonal
Formulation	Liquid in PBS containing 50% glycerol, 0.5% BSA and 0.02% sodium azide.
Storage Instructions	Store at -20°C for one year. For short term storage and frequent use, store at 4°C for up to one month. Avoid repeated freeze-thaw cycles.
Host	Rabbit
Uniprot ID	O75477

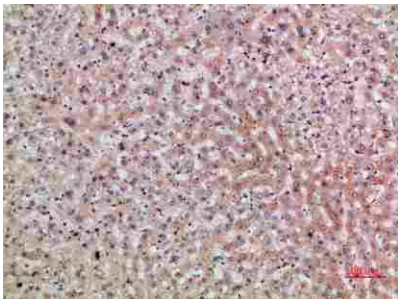
### Technical Details

Immunogen	Synthesized peptide derived from ERLIN1/2 at AA range: 31-80
Isotype	IgG
Form	Liquid
Concentration	This antibody's concentration is >0.5mg/ml.
Purification	Immunogen affinity purified
Suggested Dilutions	WB, 1:500-2000

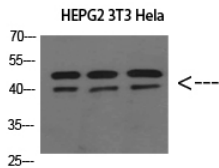
## Anti-ERLIN1/2 Antibody (A08034-1) Images



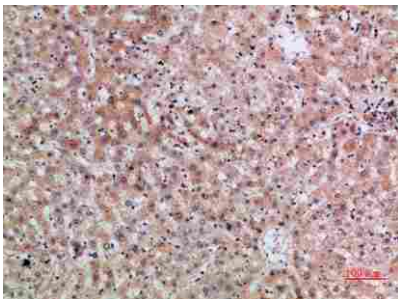
Western Blot (WB) analysis of specific cells using antibody diluted at 1:1000.



Immunohistochemical analysis of paraffin-embedded human liver, antibody was diluted at 1:200.



Western Blot (WB) analysis of HepG2 3T3 HeLa cells using ERLIN1/2 Polyclonal antibody diluted at 1:800.



Immunohistochemical analysis of paraffin-embedded human liver, antibody was diluted at 1:200.

## Submit a product review to Biocompare.com

Submit a review of this product to Biocompare.com to receive a \$20 Amazon.com giftcard! Your reviews help your fellow scientists make the right decisions. Thank you for your contribution.

