

Anti-LAMTOR3 Antibody

Catalog Number: A08040

About LAMTOR3

The late endosomal/lysosomal adaptor MAPK and MTOR activator 3 (LAMTOR3) protein belongs to the LAMTOR family of proteins, and together with LAMTOR2 and the MAPK1 and ERK kinase 1 (MEK1) localizes to late endosomes where it is required for the efficient activation of ERK signaling (1,2). This complex is involved in the regulation of late endosomal traffic and cellular proliferation (3) and plays a role in cellular host defense against Salmonella infection (4).

Overview

Product Name	Anti-LAMTOR3 Antibody
Reactive Species	Human, Mouse, Rat
Description	Boster Bio Anti-LAMTOR3 Antibody (Catalog # A08040). Tested in ELISA, WB, IHC-P, IF applications. This antibody reacts with Human, Mouse, Rat.
Application	ELISA, IF, IHC-P, WB
Clonality	Polyclonal
Formulation	LAMTOR3 Antibody is supplied in PBS containing 0.02% sodium azide.
Storage Instructions	LAMTOR3 antibody can be stored at 4°C for three months and -20°C, stable for up to one year.
Host	Rabbit
Uniprot ID	Q9UHA4

Technical Details

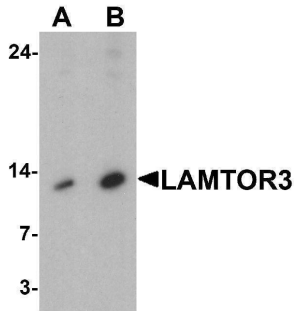
Immunogen	LAMTOR3 antibody was raised against an 15 amino acid peptide near the center of human LAMTOR3. The immunogen is located within amino acids 40 - 90 of LAMTOR3.
Predicted Reactive Species	Bovine, Chicken
Cross Reactivity	LAMTOR3 antibody is human, mouse and rat reactive. At least two isoforms of LAMTOR3 are known to exist; this antibody will detect both isoforms. LAMTOR3 antibody is predicted to not cross-react with other LAMTOR family proteins.
Isotype	IgG
Form	Liquid
Concentration	1 mg/mL
Purification	LAMTOR3 antibody is affinity chromatography purified via peptide column.

Suggested Dilutions

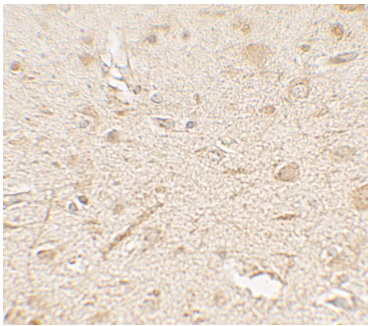
LAMTOR3 antibody can be used for detection of LAMTOR3 by Western blot at 1 - 2 ug/ml. Antibody can also be used for Immunohistochemistry starting at 5 ug/mL. For immunofluorescence start at 20 ug/mL.

Antibody validated: Western Blot in human samples; Immunohistochemistry in human samples and Immunofluorescence in human samples. All other applications and species not yet tested. Optimal dilutions for each application should be determined by the researcher.

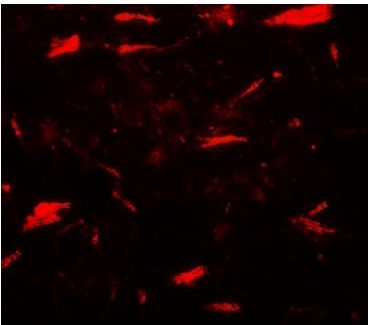
Anti-LAMTOR3 Antibody (A08040) Images



Western blot analysis of LAMTOR3 in human brain tissue lysate with LAMTOR3 antibody at (A) 1 and (B) 2 ug/ml



Immunohistochemistry of LAMTOR3 in human brain tissue with LAMTOR3 antibody at 5 ug/mL.



Immunofluorescence of LAMTOR3 in human brain tissue with LAMTOR3 antibody at 20 ug/mL.

Submit a product review to [Biocompare.com](https://www.biocompare.com)

Submit a review of this product to [Biocompare.com](https://www.biocompare.com) to receive a \$20 Amazon.com giftcard! Your reviews help your fellow scientists make the right decisions. Thank you for your contribution.



Anti-LAMTOR3 Antibody

For Research Use Only. Not for use in diagnostic procedures.