

Anti-MAP1 MOAP1 Antibody

Catalog Number: A08043

About MOAP1

Apoptosis plays a major role in normal organism development, tissue homeostasis, and removal of damaged cells. Disruption of this process has been implicated in a variety of diseases such as cancer. Members of the Bcl-2 family are known to be critical regulators of this process. These proteins are characterized by the presence of several conserved motifs termed Bcl-2 homology (BH) domains. A related protein termed MAP-1 has recently been identified. This protein contains a BH3-like domain and induces caspase-dependent apoptosis in mammalian cells when overexpressed. It forms homodimers and associates with Bcl-2 family members such as Bax, Bcl-2, and Bcl-XL in vitro and in vivo. It has been suggested that MAP-1 associates with the tumor suppressor RASSF1A following death receptor activation, allowing a conformational change in Bax that leads to cellular apoptosis.

Overview

Product Name	Anti-MAP1 MOAP1 Antibody
Reactive Species	Human, Mouse
Description	Boster Bio Anti-MAP1 MOAP1 Antibody (Catalog # A08043). Tested in ELISA, WB applications. This antibody reacts with Human, Mouse.
Application	ELISA, WB
Clonality	Polyclonal
Formulation	MAP1 Antibody is supplied in PBS containing 0.02% sodium azide.
Storage Instructions	MAP1 antibody can be stored at 4°C for three months and -20°C, stable for up to one year. Avoid repeated freeze-thaw cycles. Antibodies should not be exposed to prolonged high temperatures.
Host	Rabbit
Uniprot ID	Q96BY2

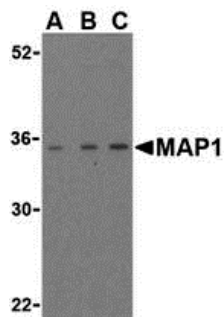
Technical Details

Immunogen	MAP-1 antibody was raised against a 15 amino acid synthetic peptide from near the center of human MAP-1. The immunogen is located within the last 50 amino acids of MAP1.
Predicted Reactive Species	Bovine, Chicken
Isotype	IgG
Form	Liquid
Concentration	1 mg/mL
Purification	MAP1 Antibody is affinity chromatography purified via peptide column.

Suggested Dilutions

MAP1 antibody can be used for the detection of MAP-1 by Western blot at 1 to 4 ug/mL.
Antibody validated: Western Blot in mouse samples. All other applications and species not yet tested. Optimal dilutions for each application should be determined by the researcher.

Anti-MAP1 MOAP1 Antibody (A08043) Images



Western blot analysis of MAP-1 in EL4 cell lysate with MAP-1 antibody (IN) at (A) 1, (B) 2, and (C) 4 ug/mL.

Submit a product review to Biocompare.com

Submit a review of this product to Biocompare.com to receive a \$20 Amazon.com giftcard! Your reviews help your fellow scientists make the right decisions. Thank you for your contribution.



Anti-MAP1 MOAP1 Antibody

For Research Use Only. Not for use in diagnostic procedures.