

## Anti-Cardiotrophin-1 (H31) CTF1 Antibody

Catalog Number: A08056

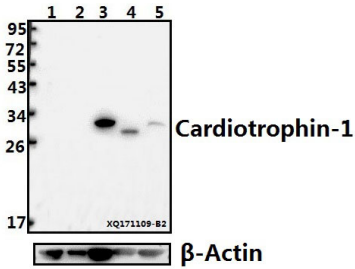
### Overview

Product Name	Anti-Cardiotrophin-1 (H31) CTF1 Antibody
Reactive Species	Human, Mouse, Rat
Description	Boster Bio Anti-Cardiotrophin-1 (H31) CTF1 Antibody catalog # A08056. Tested in WB,IHC applications. This antibody reacts with Human,Mouse,Rat.
Application	IHC, WB
Clonality	Polyclonal
Formulation	Rabbit IgG, 1mg/ml in PBS with 0.02% sodium azide, 50% glycerol, pH7.2
Storage Instructions	Store at -20°C for one year. For short term storage and frequent use, store at 4°C for up to one month. Avoid repeated freeze-thaw cycles.
Host	Rabbit
Uniprot ID	Q16619

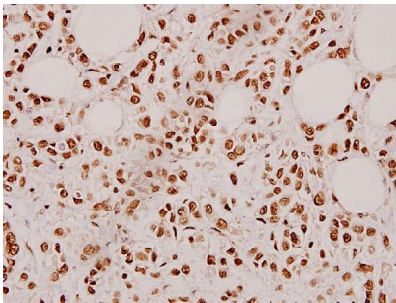
### Technical Details

Immunogen	Synthetic peptide, corresponding to amino acids 1-53 of Human CT-1.
Isotype	IgG
Form	Liquid
Concentration	1 mg/ml
Purification	The antibody was affinity-purified from rabbit antiserum by affinity-chromatography using epitope-specific immunogen and the purity is > 95% (by SDS-PAGE).
Suggested Dilutions	WB: 1:500-1:1000 IHC: 1:50-1:200

## Anti-Cardiotrophin-1 (H31) CTF1 Antibody (A08056) Images



Western blot (WB) analysis of Cardiotrophin-1 (H31) pAb at 1:500 dilution Lane1:PC3 whole cell lysate(40ug) Lane2:K562 whole cell lysate(20ug) Lane3:Jurkat whole cell lysate(40ug) Lane4:The Muscle tissue lysate of Mouse(40ug) Lane5:H9C2 whole cell lysate(40ug)



Immunohistochemistry (IHC) analyzes of Cardiotrophin-1 (H31) pAb in paraffin-embedded human breast carcinoma tissue at 1:100.

### Submit a product review to Biocompare.com

Submit a review of this product to Biocompare.com to receive a \$20 Amazon.com giftcard! Your reviews help your fellow scientists make the right decisions. Thank you for your contribution.



Anti-Cardiotrophin-1 (H31) CTF1 Antibody

For Research Use Only. Not for use in diagnostic procedures.