

Anti-PET112 Antibody (N-term)

Catalog Number: A08058

About GATB

Allows the formation of correctly charged Gln-tRNA(Gln) through the transamidation of misacylated Glu-tRNA(Gln) in the mitochondria. The reaction takes place in the presence of glutamine and ATP through an activated gamma-phospho-Glu- tRNA(Gln).

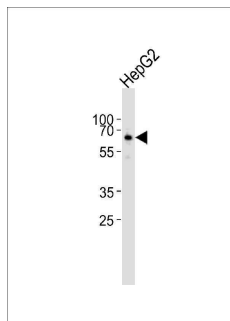
Overview

Product Name	Anti-PET112 Antibody (N-term)
Reactive Species	Human
Description	Boster Bio Anti-PET112 Antibody (N-term) (Catalog # A08058). Tested in WB application(s). This antibody reacts with Human.
Application	WB
Clonality	Polyclonal
Formulation	Purified polyclonal antibody supplied in PBS with 0.09% (W/V) sodium azide.
Storage Instructions	Maintain refrigerated at 2-8°C for up to 2 weeks. For long-term storage, store at -20°C in small aliquots to prevent freeze-thaw cycles.
Host	Rabbit
Uniprot ID	O75879

Technical Details

Immunogen	This PET112 antibody is generated from a rabbit immunized with a KLH conjugated synthetic peptide between 25-60 amino acids from the N-terminal region of human PET112.
Predicted Reactive Species	Mouse
Isotype	Rabbit IgG
Purification	This antibody is purified through a protein A column, followed by peptide affinity purification.
Suggested Dilutions	WB: 1:1000

Anti-PET112 Antibody (N-term) (A08058) Images



Western blot analysis of lysate from HepG2 cell line, using PET112 Antibody (N-term). A08058 was diluted at 1:1000. A goat anti-rabbit IgG H&L (HRP) at 1:5000 dilution was used as the secondary antibody. Lysate at 35ug.

Submit a product review to Biocompare.com

Submit a review of this product to Biocompare.com to receive a \$20 Amazon.com giftcard! Your reviews help your fellow scientists make the right decisions. Thank you for your contribution.



Anti-PET112 Antibody (N-term)

For Research Use Only. Not for use in diagnostic procedures.