

## Anti-HES-6 Antibody

Catalog Number: A08067-1

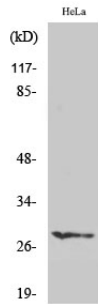
### Overview

|                      |   |
|----------------------|---|
| Product Name         | Anti-HES-6 Antibody   |
| Reactive Species     | Human, Mouse  |
| Description          | Boster Bio Anti-HES-6 Antibody catalog # A08067-1. Tested in ELISA, IHC, WB applications. This antibody reacts with Human.  |
| Application          | ELISA, IF, IHC, WB  |
| Clonality            | Polyclonal  |
| Formulation          | Liquid in PBS containing 50% glycerol, 0.5% stabilizing protein and 0.02% sodium azide. This antibody is supplied in a stabilized formulation. Compatibility with conjugation reactions depends on the chemistry of the conjugation method used. For conjugation methods that are not compatible with the stabilizing components present in this formulation, a carrier-free antibody format is required. |
| Storage Instructions | Store at -20°C for one year. For short term storage and frequent use, store at 4°C for up to one month. Avoid repeated freeze-thaw cycles.  |
| Host                 | Rabbit  |
| Uniprot ID           | Q96HZ4  |

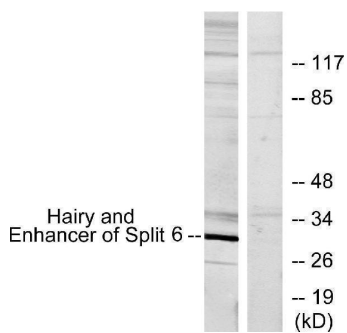
### Technical Details

|                     |   |
|---------------------|---|
| Immunogen           | The antiserum was produced against synthesized peptide derived from human HES6. AA range:1-50                         |
| Isotype             | IgG   |
| Form                | Liquid  |
| Concentration       | 1 mg/ml   |
| Purification        | The antibody was affinity-purified from rabbit antiserum by affinity-chromatography using epitope-specific immunogen. |
| Suggested Dilutions | WB 1:500-1:2000<br>IHC 1:100-1:300<br>ELISA 1:10000<br>IF 1:50-200  |

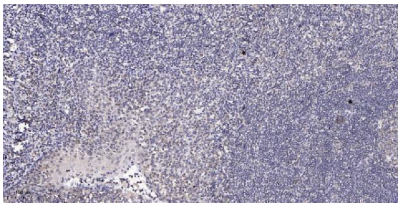
## Anti-HES-6 Antibody (A08067-1) Images



Western Blot analysis of various cells using HES-6 Polyclonal Antibody diluted at 1:1000 cells nucleus extracted by Minute TM Cytoplasmic and Nuclear Fractionation kit .



Western blot analysis of lysates from HeLa cells, using HES6 Antibody. The lane on the right is blocked with the synthesized peptide.



Immunohistochemical analysis of paraffin-embedded human tonsil. 1, Antibody was diluted at 1:200 (4° overnight). 2, Tris-EDTA, pH9.0 was used for antigen retrieval. 3, Secondary antibody was diluted at 1:200 (room temperature, 45min).

### Submit a product review to Biocompare.com

Submit a review of this product to Biocompare.com to receive a \$20 Amazon.com giftcard! Your reviews help your fellow scientists make the right decisions. Thank you for your contribution.



Anti-HES-6 Antibody

For Research Use Only. Not for use in diagnostic procedures.