

Anti-KDM1B Antibody

Catalog Number: A08071

About KDM1B

Flavin-dependent histone demethylases regulate histone lysine methylation, an epigenetic mark that regulates gene expression and chromatin function (reviewed in 1). KDM1B is a recently identified histone H3K4 demethylase that is required to establish maternal genomic imprints; targeted disruption of the KDM1B gene in mice led to lethality in their embryos, suggesting demethylation of H3K4 is critical for establishing the DNA methylation imprints (2). KDM1B has also been shown to play a role in the transcription elongation in several genes (3).

Overview

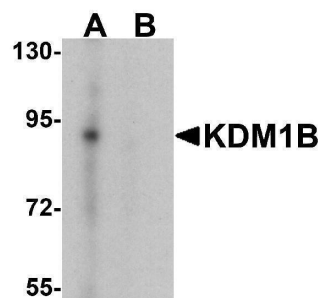
| | |
|----------------------|--|
| Product Name | Anti-KDM1B Antibody |
| Reactive Species | Human, Mouse |
| Description | Boster Bio Anti-KDM1B Antibody (Catalog # A08071). Tested in ELISA, WB applications. This antibody reacts with Human, Mouse. |
| Application | ELISA, WB |
| Clonality | Polyclonal |
| Formulation | KDM1B antibody is supplied in PBS containing 0.02% sodium azide. |
| Storage Instructions | KDM1B antibody can be stored at 4°C for three months and -20°C, stable for up to one year. |
| Host | Rabbit |
| Uniprot ID | Q8NB78 |

Technical Details

| | |
|----------------------------|--|
| Immunogen | KDM1B antibody was raised against a 17 amino acid peptide near the amino terminus of human KDM1B. The immunogen is located within amino acids 80 - 130 of KDM1B. |
| Predicted Reactive Species | Bovine, Chicken |
| Cross Reactivity | KDM1B antibody is human, mouse and rat reactive. At least two isoforms of KDM1B are known to exist; this KDM1B antibody will detect both isoforms. |
| Isotype | IgG |
| Form | Liquid |
| Concentration | 1 mg/mL |
| Purification | KDM1B antibody is affinity chromatography purified via peptide column. |
| Suggested Dilutions | KDM1B antibody can be used for detection of KDM1B by Western blot at 0.5 ug/ml. |

Antibody validated: Western Blot in human samples. All other applications and species not yet tested. Optimal dilutions for each application should be determined by the researcher.

Anti-KDM1B Antibody (A08071) Images



Western blot analysis of KDM1B in K562 cell lysate with KDM1B antibody at 0.5 ug/ml in (A) the absence and (B) the presence of blocking peptide

Submit a product review to Biocompare.com

Submit a review of this product to Biocompare.com to receive a \$20 Amazon.com giftcard! Your reviews help your fellow scientists make the right decisions. Thank you for your contribution.



Anti-KDM1B Antibody

For Research Use Only. Not for use in diagnostic procedures.