

## Anti-F-BAR domain only protein 2 FCHO2 Antibody

Catalog Number: A08075

### About FCHO2

FCHO2 (FCH domain only 2) is a ubiquitously expressed member of the FCFBS superfamily characterized by FES-CIP4 homology (FCH) domain, an FBH domain, and an SH3 domain. Both FCHO2 and the related protein FCHO1 are mediators of clathrin-mediated endocytosis, acting to sculpt the initial bud site and recruit the clathrin machinery for clathrin-coated vesicle formation. FCHO2 binds to Eps15, an important adaptor protein in clathrin-mediated endocytosis.

### Overview

Product Name	Anti-F-BAR domain only protein 2 FCHO2 Antibody
Reactive Species	Human, Mouse, Rat
Description	Boster Bio Anti-F-BAR domain only protein 2 FCHO2 Antibody (Catalog # A08075). Tested in ELISA, WB, IHC-P, IF applications. This antibody reacts with Human, Mouse, Rat.
Application	ELISA, IF, IHC-P, WB
Clonality	Polyclonal
Formulation	FCHO2 Antibody is supplied in PBS containing 0.02% sodium azide.
Storage Instructions	FCHO2 antibody can be stored at 4°C for three months and -20°C, stable for up to one year. Avoid repeated freeze-thaw cycles. Antibodies should not be exposed to prolonged high temperatures.
Host	Rabbit
Uniprot ID	Q0JRZ9

### Technical Details

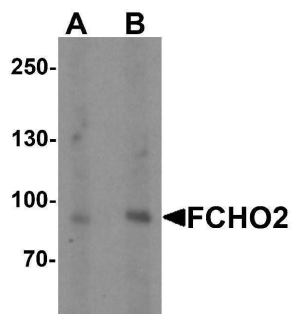
Immunogen	FCHO2 antibody was raised against a 15 amino acid synthetic peptide near the center of human FCHO2. The immunogen is located within amino acids 340 - 390 of FCHO2.
Predicted Reactive Species	Bovine, Chicken
Cross Reactivity	FCHO2 antibody is predicted to not cross-react with other FCHO protein family members. At least the isoforms of FCHO2 are known to exist; this antibody will detect only the two longest isoforms.
Isotype	IgG
Form	Liquid
Concentration	1 mg/mL
Purification	FCHO2 Antibody is affinity chromatography purified via peptide column.

Suggested Dilutions

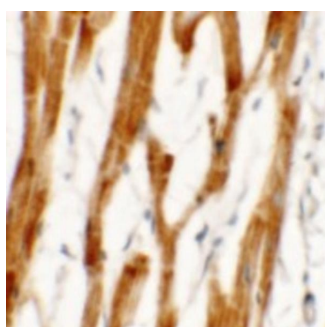
FCHO2 antibody can be used for detection of FCHO2 by Western blot at 1 - 2 ug/mL. Antibody can also be used for immunohistochemistry starting at 2.5 ug/mL. For immunofluorescence start at 2.5 ug/mL.

Antibody validated: Western Blot in rat samples; Immunohistochemistry in human samples and Immunofluorescence in human samples. All other applications and species not yet tested. Optimal dilutions for each application should be determined by the researcher.

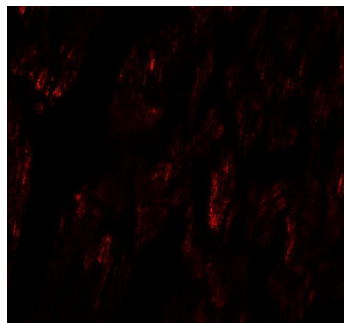
## Anti-F-BAR domain only protein 2 FCHO2 Antibody (A08075) Images



Western blot analysis of FCHO2 in rat heart tissue lysate with FCHO2 antibody at (A) 1 and (B) 2 ug/ml



Immunohistochemistry of FCHO2 in human heart tissue with FCHO2 antibody at 2.5 ug/mL.



Immunofluorescence of FCHO2 in human heart tissue with FCHO2 antibody at 20 ug/mL.

### Submit a product review to [Biocompare.com](https://www.biocompare.com)

Submit a review of this product to [Biocompare.com](https://www.biocompare.com) to receive a \$20 Amazon.com giftcard! Your reviews help your fellow scientists make the right decisions. Thank you for your contribution.



Anti-F-BAR domain only protein 2 FCHO2 Antibody

For Research Use Only. Not for use in diagnostic procedures.