

## Anti-Cleaved-MMP-17 (Q129) Antibody

Catalog Number: A08090

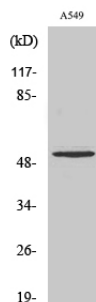
### Overview

Product Name	Anti-Cleaved-MMP-17 (Q129) Antibody
Reactive Species	Human
Description	Boster Bio Anti-Cleaved-MMP-17 (Q129) Antibody catalog # A08090. Tested in ELISA, WB applications. This antibody reacts with Human.
Application	ELISA, WB
Clonality	Polyclonal
Formulation	Liquid in PBS containing 50% glycerol, 0.5% BSA and 0.02% sodium azide.
Storage Instructions	Store at -20°C for one year. For short term storage and frequent use, store at 4°C for up to one month. Avoid repeated freeze-thaw cycles.
Host	Rabbit
Uniprot ID	Q9ULZ9

### Technical Details

Immunogen	Synthesized peptide derived from the Internal region of human MMP-17. at AA range: 80-160
Isotype	IgG
Form	Liquid
Purification	Immunogen affinity purified
Suggested Dilutions	<p>Dilute the sample so that the expected range of concentrations fall within the detection range of this kit.</p> <p>If the expected range of concentration is unknown, a pilot test should be conducted to decide the optimal dilution ratio for your samples.</p> <p>Some PubMed article(s) citing the expression level of this target are as follows: Boster Bio's internal QC testing used WB, 1:500-1:2000 ELISA, 1:10000</p> <p>For protocols, please visit <a href="https://www.bosterbio.com/protocol-and-troubleshooting/">https://www.bosterbio.com/protocol-and-troubleshooting/</a></p>

## Anti-Cleaved-MMP-17 (Q129) Antibody (A08090) Images



Western Blot (WB) analysis of specific cells using Cleaved-MMP-17 (Q129) Polyclonal antibody.

### Submit a product review to Biocompare.com

Submit a review of this product to Biocompare.com to receive a \$20 Amazon.com giftcard! Your reviews help your fellow scientists make the right decisions. Thank you for your contribution.



Anti-Cleaved-MMP-17 (Q129) Antibody