

Anti-NALP10 NLRP10 Antibody

Catalog Number: A08124

About NLRP10

NALP proteins are cytoplasmic proteins that form a subfamily within the larger CATERPILLER family and are thought to play a crucial role in cell proliferation and reproduction. Like all other NALP family members, NALP10 has a C-terminal leucine-rich repeat (LRR) region, an N-terminal Pyrin domain (PYD) followed by a NACHT domain, and a NACHT-associated domain. It was initially identified as PYNOD, an Apaf-1-like protein that binds to ASC, caspase-1 and IL-1beta, inhibiting the autoprocessing of caspase-1, caspase-1-mediated IL-1beta processing, and ASC aggregation. NALP10 is thus a potent regulator of apoptosis and inflammation.

Overview

Product Name	Anti-NALP10 NLRP10 Antibody
Reactive Species	Human
Description	Boster Bio Anti-NALP10 NLRP10 Antibody (Catalog # A08124). Tested in ELISA, WB, IHC-P, IF applications. This antibody reacts with Human.
Application	ELISA, IF, IHC-P, WB
Clonality	Polyclonal
Formulation	NALP10 Antibody is supplied in PBS containing 0.02% sodium azide.
Storage Instructions	NALP10 antibody can be stored at 4°C for three months and -20°C, stable for up to one year. Avoid repeated freeze-thaw cycles. Antibodies should not be exposed to prolonged high temperatures.
Host	Rabbit
Uniprot ID	Q86W26

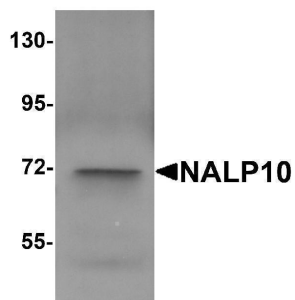
Technical Details

Immunogen	NALP10 antibody was raised against a 14 amino acid synthetic peptide near the amino terminus of human NALP10. The immunogen is located within the first 50 amino acids of NALP10.
Predicted Reactive Species	Mouse
Isotype	IgG
Form	Liquid
Concentration	1 mg/mL
Purification	NALP10 Antibody is affinity chromatography purified via peptide column.
Suggested Dilutions	NALP10 antibody can be used for detection of NALP10 by Western blot at 1 ug/mL. Antibody can also be used for immunohistochemistry starting at 10 ug/mL. For immunofluorescence start at 20

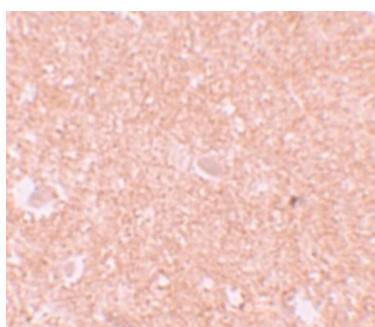
ug/mL.

Antibody validated: Western Blot in human samples; Immunohistochemistry in human samples and Immunofluorescence in human samples. All other applications and species not yet tested. Optimal dilutions for each application should be determined by the researcher.

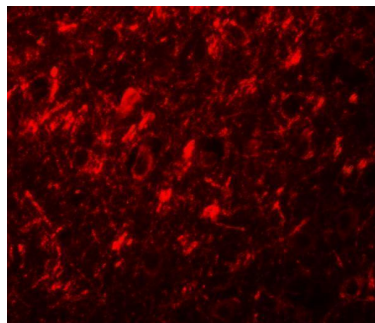
Anti-NALP10 NLRP10 Antibody (A08124) Images



Western blot analysis of NALP10 in human brain tissue lysate with NALP10 antibody at 1 ug/mL.



Immunohistochemistry of NALP10 in human brain tissue with NALP10 antibody at 10 ug/mL.



Immunofluorescence of NALP10 in human brain tissue with NALP10 antibody at 20 ug/mL.

Submit a product review to Biocompare.com

Submit a review of this product to Biocompare.com to receive a \$20 Amazon.com giftcard! Your reviews help your fellow scientists make the right decisions. Thank you for your contribution.



Anti-NALP10 NLRP10 Antibody

For Research Use Only. Not for use in diagnostic procedures.