

Anti-NALP5 NLRP5 Antibody

Catalog Number: A08138

About NLRP5

NALP proteins include the apoptosis regulator APAF1 (apoptotic protease activating factor 1) and mammalian NOD-LRR proteins and are thought to be involved in inflammation and reproduction. NALP5, also known as MATER, is a maternal gene required for early embryonic development in mice. Increased NALP5 expression was observed in two neuronal injury models, and transient expression of recombinant NALP5 in neurons induced caspase-3 activation and apoptosis, suggesting that NALP5 also plays a role in caspase activation and apoptosis in injured neurons, and may thus represent a novel target for therapeutic treatment in neurodegenerative disorders.

Overview

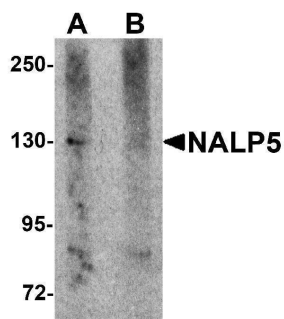
Product Name	Anti-NALP5 NLRP5 Antibody
Reactive Species	Human, Mouse, Rat
Description	Boster Bio Anti-NALP5 NLRP5 Antibody (Catalog # A08138). Tested in ELISA, WB, IHC-P, IF applications. This antibody reacts with Human, Mouse, Rat.
Application	ELISA, IF, IHC-P, WB
Clonality	Polyclonal
Formulation	NALP5 Antibody is supplied in PBS containing 0.02% sodium azide.
Storage Instructions	NALP5 antibody can be stored at 4°C for three months and -20°C, stable for up to one year. Avoid repeated freeze-thaw cycles. Antibodies should not be exposed to prolonged high temperatures.
Host	Rabbit
Uniprot ID	P59047

Technical Details

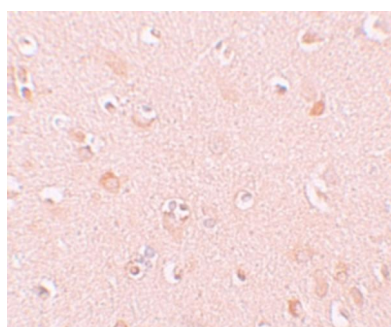
Immunogen	NALP5 antibody was raised against a 14 amino acid synthetic peptide near the carboxy terminus of human NALP5. The immunogen is located within the last 50 amino acids of NALP5.
Predicted Reactive Species	Mouse
Isotype	IgG
Form	Liquid
Concentration	1 mg/mL
Purification	NALP5 Antibody is affinity chromatography purified via peptide column.
Suggested Dilutions	NALP5 antibody can be used for detection of NALP5 by Western blot at 1 ug/mL. Antibody can also be used for immunohistochemistry starting at 10 ug/mL. For immunofluorescence start at 20 ug/mL.

Antibody validated: Western Blot in mouse samples; Immunohistochemistry in human samples and Immunofluorescence in human samples. All other applications and species not yet tested. Optimal dilutions for each application should be determined by the researcher.

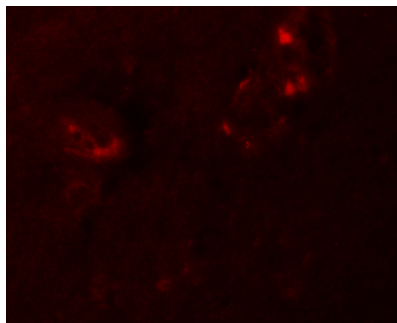
Anti-NALP5 NLRP5 Antibody (A08138) Images



Western blot analysis of NALP5 in mouse brain tissue lysate with NALP5 antibody at 1 ug/mL in (A) the absence and (B) the presence of blocking peptide.



Immunohistochemistry of NALP5 in human brain tissue with NALP5 antibody at 10 ug/mL.



Immunofluorescence of NALP5 in human brain tissue with NALP5 antibody at 20 ug/mL.

Submit a product review to [Biocompare.com](https://www.biocompare.com)

Submit a review of this product to [Biocompare.com](https://www.biocompare.com) to receive a \$20 Amazon.com giftcard! Your reviews help your fellow scientists make the right decisions. Thank you for your contribution.



Anti-NALP5 NLRP5 Antibody

For Research Use Only. Not for use in diagnostic procedures.