

Anti-PCGF1 Antibody (Center)

Catalog Number: A08147

About PCGF1

Component of the Polycomb group (PcG) multiprotein BCOR complex, a complex required to maintain the transcriptionally repressive state of some genes, such as BCL6 and the cyclin- dependent kinase inhibitor, CDKN1A. Transcriptional repressor that may be targeted to the DNA by BCL6; this transcription repressor activity may be related to PKC signaling pathway. Represses CDKN1A expression by binding to its promoter, and this repression is dependent on the retinoic acid response element (RARE element). Promotes cell cycle progression and enhances cell proliferation as well. May have a positive role in tumor cell growth by down- regulating CDKN1A. Component of a Polycomb group (PcG) multiprotein PRC1-like complex, a complex class required to maintain the transcriptionally repressive state of many genes, including Hox genes, throughout development. PcG PRC1 complex acts via chromatin remodeling and modification of histones; it mediates monoubiquitination of histone H2A 'Lys-119', rendering chromatin heritably changed in its expressibility.

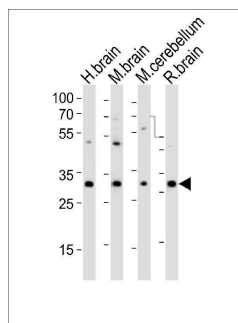
Overview

Product Name	Anti-PCGF1 Antibody (Center)
Reactive Species	Human, Mouse, Rat
Description	Boster Bio Anti-PCGF1 Antibody (Center) (Catalog # A08147). Tested in WB application(s). This antibody reacts with Human, Mouse, Rat.
Application	WB
Clonality	Polyclonal
Formulation	Purified polyclonal antibody supplied in PBS with 0.09% (W/V) sodium azide.
Storage Instructions	Maintain refrigerated at 2-8°C for up to 2 weeks. For long-term storage, store at -20°C in small aliquots to prevent freeze-thaw cycles.
Host	Rabbit
Uniprot ID	Q9BSM1

Technical Details

Immunogen	This PCGF1 antibody is generated from a rabbit immunized with a KLH conjugated synthetic peptide between 117-151 amino acids from the Central region of human PCGF1.
Predicted Reactive Species	Bovine
Isotype	Rabbit IgG
Purification	This antibody is purified through a protein A column, followed by peptide affinity purification.
Suggested Dilutions	WB: 1:1000

Anti-PCGF1 Antibody (Center) (A08147) Images



Western blot analysis of lysates from human brain, mouse brain, mouse cerebellum, rat brain tissue (from left to right), using PCGF1 Antibody (Center). A08147 was diluted at 1:1000 at each lane. A goat anti-rabbit IgG H&L (HRP) at 1:10000 dilution was used as the secondary antibody. Lysates at 20ug per lane.

Submit a product review to Biocompare.com

Submit a review of this product to Biocompare.com to receive a \$20 Amazon.com giftcard! Your reviews help your fellow scientists make the right decisions. Thank you for your contribution.



Anti-PCGF1 Antibody (Center)

For Research Use Only. Not for use in diagnostic procedures.