

Anti-CHMP4C Rabbit Polyclonal Antibody

Catalog Number: A08153

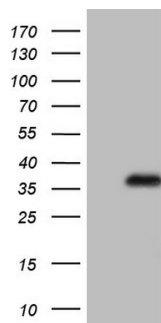
Overview

| | |
|----------------------|--|
| Product Name | Anti-CHMP4C Rabbit Polyclonal Antibody |
| Reactive Species | Human, Mouse, Rat |
| Description | Boster Bio Rabbit polyclonal CHMP4C Antibody. Catalog# A08153. Tested in WB. This antibody reacts with Human, Mouse, Rat. |
| Conjugate | Unconjugated |
| Application | WB |
| Clonality | Polyclonal |
| Formulation | PBS (pH 7.3) containing 1% stabilizing protein, 50% glycerol and 0.02% sodium azide. This antibody is supplied in a stabilized formulation. Compatibility with conjugation reactions depends on the chemistry of the conjugation method used. For conjugation methods that are not compatible with the stabilizing components present in this formulation, a carrier-free antibody format is required. |
| Storage Instructions | Store at -20°C for one year. For short term storage and frequent use, store at 4°C for up to one month. Avoid repeated freeze-thaw cycles. |
| Host | Rabbit |
| Uniprot ID | Q96CF2 |

Technical Details

| | |
|---------------------|--|
| Immunogen | Synthetic peptide conjugated to KLH derived from C terminal of Human CHMP4C. |
| Isotype | IgG |
| Concentration | 1 mg/ml |
| Purification | Purified from the immunized serum by affinity chromatography (Protein A/G) |
| Suggested Dilutions | WB 1:500 |

Anti-CHMP4C Rabbit Polyclonal Antibody (A08153) Images



HEK293T cells were transfected with the pCMV6-ENTRY control (Left lane) or pCMV6-ENTRY CHMP4C (Right lane) cDNA for 48 hrs and lysed. Equivalent amounts of cell lysates (5 ug per lane) were separated by SDS-PAGE and immunoblotted with Rabbit pol.

Submit a product review to Biocompare.com

Submit a review of this product to Biocompare.com to receive a \$20 Amazon.com giftcard! Your reviews help your fellow scientists make the right decisions. Thank you for your contribution.



Anti-CHMP4C Rabbit Polyclonal Antibody

For Research Use Only. Not for use in diagnostic procedures.