

Anti-CLECSF6 CLEC4A Antibody

Catalog Number: A08158

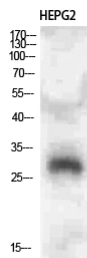
Overview

Product Name	Anti-CLECSF6 CLEC4A Antibody
Reactive Species	Human, Mouse, Rat
Description	Boster Bio Anti-CLECSF6 CLEC4A Antibody catalog # A08158. Tested in WB, ELISA applications. This antibody reacts with Human, Mouse, Rat.
Application	ELISA, WB
Clonality	Polyclonal
Formulation	Liquid in PBS containing 50% glycerol, 0.5% stabilizing protein and 0.02% sodium azide. This antibody is supplied in a stabilized formulation. Compatibility with conjugation reactions depends on the chemistry of the conjugation method used. For conjugation methods that are not compatible with the stabilizing components present in this formulation, a carrier-free antibody format is required.
Storage Instructions	Store at -20°C for one year. For short term storage and frequent use, store at 4°C for up to one month. Avoid repeated freeze-thaw cycles.
Host	Rabbit
Uniprot ID	Q9UMR7

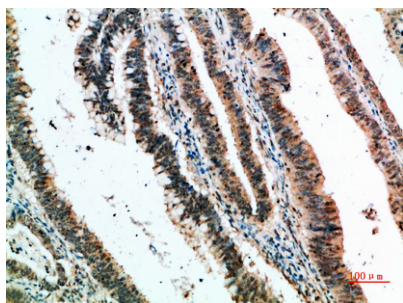
Technical Details

Immunogen	The antiserum was produced against synthesized peptide derived from the C-terminal region of human CLEC4A. AA range:161-210
Isotype	IgG
Form	Liquid
Concentration	1 mg/ml
Purification	Immunogen affinity purified
Suggested Dilutions	WB 1:500-2000 ELISA 1:10000-20000

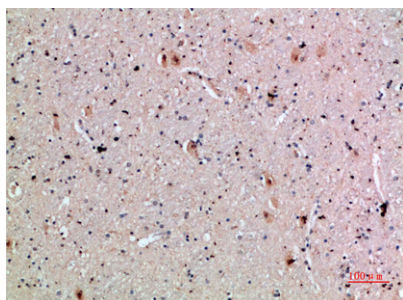
Anti-CLECSF6 CLEC4A Antibody (A08158) Images



Western Blot analysis of HEPG2 cells using CLECSF6 Polyclonal Antibody diluted at 1:500. Secondary antibody was diluted at 1:20000



Immunohistochemical analysis of paraffin-embedded human-colon-cancer, antibody was diluted at 1:200



Immunohistochemical analysis of paraffin-embedded human-brain, antibody was diluted at 1:200

Submit a product review to [Biocompare.com](https://www.biocompare.com)

Submit a review of this product to [Biocompare.com](https://www.biocompare.com) to receive a \$20 Amazon.com giftcard! Your reviews help your fellow scientists make the right decisions. Thank you for your contribution.



Anti-CLECSF6 CLEC4A Antibody

For Research Use Only. Not for use in diagnostic procedures.