

## Anti-LMBRD1 Antibody

Catalog Number: A08163

### About LMBRD1

LMBRD1, also known as NESI (nuclear export signal-interacting protein), is a lysosomal membrane protein that is thought to be involved in the transport and metabolism of cobalamin. LMBRD1 was initially identified as interacting with the large form of the hepatitis delta antigen and may be required for the nucleocytoplasmic shuttling of the hepatitis delta virus. Mutations in this gene are associated with the vitamin B12 metabolism disorder termed, homocystinuria-megaloblastic anemia complementation type F (cb1F).

### Overview

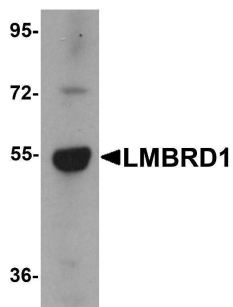
Product Name	Anti-LMBRD1 Antibody
Reactive Species	Human, Mouse, Rat
Description	Boster Bio Anti-LMBRD1 Antibody (Catalog # A08163). Tested in ELISA, WB, IHC-P, IF applications. This antibody reacts with Human, Mouse, Rat.
Application	ELISA, IF, IHC-P, WB
Clonality	Polyclonal
Formulation	LMBRD1 Antibody is supplied in PBS containing 0.02% sodium azide.
Storage Instructions	LMBRD1 antibody can be stored at 4°C for three months and -20°C, stable for up to one year. Avoid repeated freeze-thaw cycles. Antibodies should not be exposed to prolonged high temperatures.
Host	Rabbit
Uniprot ID	Q9NUN5

### Technical Details

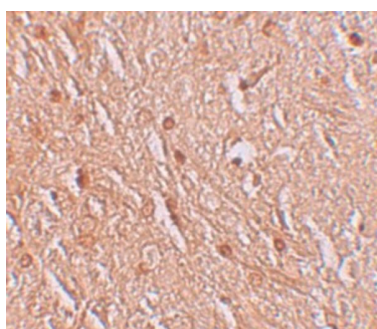
Immunogen	LMBRD1 antibody was raised against an 18 amino acid synthetic peptide near the carboxy terminus of human LMBRD1. The immunogen is located within the last 50 amino acids of LMBRD1.
Predicted Reactive Species	Mouse
Isotype	IgG
Form	Liquid
Concentration	1 mg/mL
Purification	LMBRD1 Antibody is affinity chromatography purified via peptide column.
Suggested Dilutions	LMBRD1 antibody can be used for detection of LMBRD1 by Western blot at 1 ug/mL. Antibody can also be used for immunohistochemistry starting at 2.5 ug/mL. For immunofluorescence start at 20 ug/mL.

Antibody validated: Western Blot in human samples; Immunohistochemistry in human samples and Immunofluorescence in human samples. All other applications and species not yet tested. Optimal dilutions for each application should be determined by the researcher.

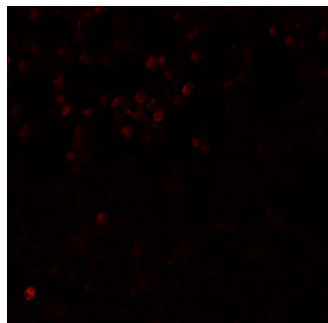
## Anti-LMBRD1 Antibody (A08163) Images



Western blot analysis of LMBRD1 in human brain tissue lysate with LMBRD1 antibody at 1 ug/mL.



Immunohistochemistry of LMBRD1 in human brain tissue with LMBRD1 antibody at 2.5 ug/mL.



Immunofluorescence of LMBRD1 in human brain tissue with LMBRD1 antibody at 20 ug/mL.

### Submit a product review to [Biocompare.com](https://www.biocompare.com)

Submit a review of this product to [Biocompare.com](https://www.biocompare.com) to receive a \$20 Amazon.com giftcard! Your reviews help your fellow scientists make the right decisions. Thank you for your contribution.



### Anti-LMBRD1 Antibody

For Research Use Only. Not for use in diagnostic procedures.