

Anti-MECR Antibody

Catalog Number: A08189

About MECR

The mitochondrial trans-2-enoyl-CoA reductase (MECR), was initially identified as nuclear receptor-binding factor 1 (NRBF1), which can interact with a multitude of nuclear hormone receptors in the presence of the respective ligands. MECR has been shown to be part of the mitochondrial fatty acid synthesis (FAS II) system and to catalyze the NADPH-dependent reduction of 2-enoyl thioesters, generating saturated acyl-groups. Overexpression of this gene in transgenic mice can lead to cardiac abnormalities, suggesting that inappropriate expression of genes of FAS II can result in the development of hereditary cardiomyopathy.

Overview

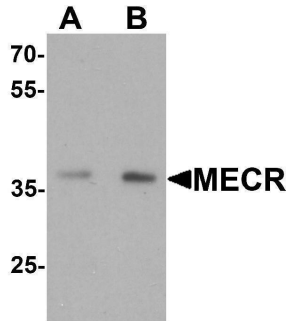
Product Name	Anti-MECR Antibody
Reactive Species	Human, Mouse, Rat
Description	Boster Bio Anti-MECR Antibody (Catalog # A08189). Tested in ELISA, WB applications. This antibody reacts with Human, Mouse, Rat.
Application	ELISA, WB
Clonality	Polyclonal
Formulation	MECR Antibody is supplied in PBS containing 0.02% sodium azide.
Storage Instructions	MECR antibody can be stored at 4°C for three months and -20°C, stable for up to one year.
Host	Rabbit
Uniprot ID	Q9BV79

Technical Details

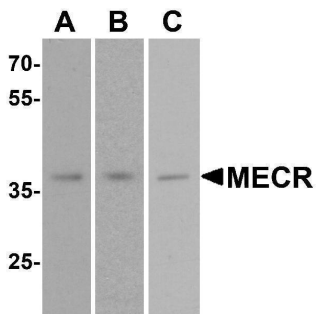
Immunogen	Rabbit polyclonal MECR antibody was raised against a 15 amino acid peptide near the carboxy terminus of human MECR. The immunogen is located within amino acids 300 - 350 of MECR.
Predicted Reactive Species	Bovine
Cross Reactivity	At least two isoforms of MECR are known to exist; this antibody will detect both isoforms.
Isotype	IgG
Form	Liquid
Concentration	1 mg/mL
Purification	MECR Antibody is affinity chromatography purified via peptide column.
Suggested Dilutions	MECR antibody can be used for detection of MECR by Western blot at 1 - 2 ug/mL.

Antibody validated: Western Blot in human, mouse, and rat samples. All other applications and species not yet tested. Optimal dilutions for each application should be determined by the researcher.

Anti-MECR Antibody (A08189) Images



Western blot analysis of MECR in human brain tissue lysate with MECR antibody at (A) 1 and (B) 2 ug/mL.



Western blot analysis of MECR in (A) human brain tissue, (B) mouse brain tissue, and (C) rat brain tissue lysate with MECR antibody at 1 ug/mL.

Submit a product review to [Biocompare.com](https://www.biocompare.com)

Submit a review of this product to [Biocompare.com](https://www.biocompare.com) to receive a \$20 Amazon.com giftcard! Your reviews help your fellow scientists make the right decisions. Thank you for your contribution.



Anti-MECR Antibody

For Research Use Only. Not for use in diagnostic procedures.