

## Anti-PACS2 Antibody

Catalog Number: A08193

### About PACS2

PACS2 (phosphofurin acidic cluster sorting protein-2), PACS1L, is an 889 amino acid protein that localizes to both the mitochondrion and the lumen of the endoplasmic reticulum (ER) and belongs to the PACS family (1,2). It is expressed in a broad range of tissues with highest expression in skeletal muscle, brain, heart, testis and pancreas (2). PACS2 interacts with Polycystin-2 and BID and functions as a sorting protein that regulates mitochondria-ER communication and is thought to be involved in ion channel trafficking, specifically direct cluster-containing ion channels to distinct subcellular compartments (3-5).

### Overview

|                      |  |
|----------------------|--|
| Product Name         | Anti-PACS2 Antibody  |
| Reactive Species     | Human, Mouse, Rat  |
| Description          | Boster Bio Anti-PACS2 Antibody (Catalog # A08193). Tested in ELISA, WB, IHC-P, IF applications. This antibody reacts with Human, Mouse, Rat. |
| Application          | ELISA, IF, IHC-P, WB   |
| Clonality            | Polyclonal   |
| Formulation          | PACS2 antibody is supplied in PBS containing 0.02% sodium azide.   |
| Storage Instructions | PACS2 antibody can be stored at 4°C for three months and -20°C, stable for up to one year.   |
| Host                 | Rabbit   |
| Uniprot ID           | Q86VP3   |

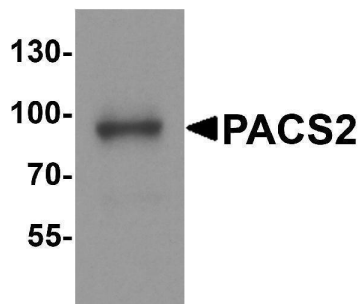
### Technical Details

|                            |   |
|----------------------------|---|
| Immunogen                  | PACS2 antibody was raised against a 17 amino acid peptide near the center of human PACS2. The immunogen is located within amino acids 330 - 380 of PACS2.   |
| Predicted Reactive Species | Bovine  |
| Cross Reactivity           | PACS2 antibody is human, mouse and rat reactive. At least three isoforms of PACS2 are known to exist; this antibody will detect all three. PACS2 antibody is predicted to not cross-react with PACS1. |
| Isotype                    | IgG   |
| Form                       | Liquid  |
| Concentration              | 1 mg/mL   |
| Purification               | PACS2 antibody is affinity chromatography purified via peptide column.  |

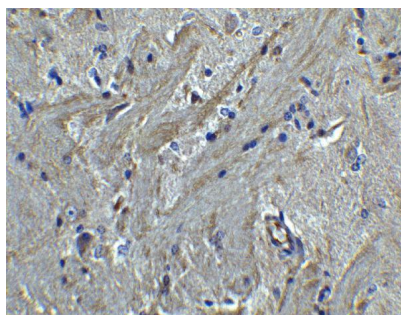
Suggested Dilutions

PACS2 antibody can be used for detection of PACS2 by Western blot at 1 - 2 ug/mL. Antibody can also be used for immunohistochemistry starting at 5 ug/mL.  
Antibody validated: Western Blot in mouse samples; Immunohistochemistry in mouse samples and Immunofluorescence in mouse samples. All other applications and species not yet tested. Optimal dilutions for each application should be determined by the researcher.

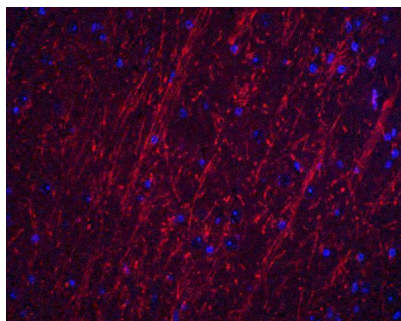
## Anti-PACS2 Antibody (A08193) Images



Western blot analysis of PACS2 in mouse brain tissue lysate with PACS2 antibody at 1 ug/ml.



Immunohistochemistry of PACS2 in mouse brain tissue with PACS2 antibody at 5 ug/mL.



Immunofluorescence of PACS2 in mouse brain tissue with PACS2 antibody at 20 ug/ml. Red: PACS2 Antibody (A08193)  
Blue: DAPI staining

## Submit a product review to Biocompare.com

Submit a review of this product to Biocompare.com to receive a \$20 Amazon.com giftcard! Your reviews help your fellow scientists make the right decisions. Thank you for your contribution.



Anti-PACS2 Antibody

For Research Use Only. Not for use in diagnostic procedures.