

## Anti-P2RY13/P2Y13 Antibody

Catalog Number: A08207

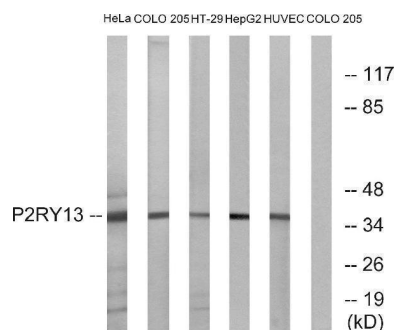
### Overview

Product Name	Anti-P2RY13/P2Y13 Antibody
Reactive Species	Human, Rat
Description	Boster Bio Anti-P2RY13/P2Y13 Antibody (Catalog# A08207). Tested in IHC, ICC, IF, WB, ELISA applications. This antibody reacts with Human, Rat.
Application	ELISA, IF, IHC, ICC, WB
Clonality	Polyclonal
Formulation	PBS containing 50% glycerol, 0.5% stabilizing protein and 0.02% sodium azide. This antibody is supplied in a stabilized formulation. Compatibility with conjugation reactions depends on the chemistry of the conjugation method used. For conjugation methods that are not compatible with the stabilizing components present in this formulation, a carrier-free antibody format is required.
Storage Instructions	Store at -20°C for one year. For short-term storage and frequent use, store at 4°C for up to one month. Avoid repeated freeze-thaw cycles.
Host	Rabbit
Uniprot ID	Q9BPV8

### Technical Details

Immunogen	A peptide derived from human P2RY13. Immunogen sequence location: 209 - 258
Isotype	Rabbit IgG
Form	Liquid
Concentration	0.5-1mg/ml, actual concentration vary by lot. Use suggested dilution ratio to decide dilution procedure.
Purification	The antibody was purified from rabbit antiserum by affinity-chromatography using immunogen.
Suggested Dilutions	WB 1:500 - 1:2000. IHC 1:100 - 1:300. ICC/IF 1:200 - 1:1000. ELISA: 1:20000. Not yet tested in other applications.

## Anti-P2RY13/P2Y13 Antibody (A08207) Images



Western blot analysis of lysates from HeLa, COLO, HT-29, HepG2, and HUVEC cells, using P2RY13 Antibody. The lane on the right is blocked with the synthesized peptide.

### Submit a product review to Biocompare.com

Submit a review of this product to Biocompare.com to receive a \$20 Amazon.com giftcard! Your reviews help your fellow scientists make the right decisions. Thank you for your contribution.



### Anti-P2RY13/P2Y13 Antibody

For Research Use Only. Not for use in diagnostic procedures.