

Anti-Centrobins CNTROB Antibody

Catalog Number: A08210-1

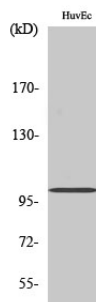
Overview

Product Name	Anti-Centrobins CNTROB Antibody
Reactive Species	Human, Mouse
Description	Boster Bio Anti-Centrobins CNTROB Antibody catalog # A08210-1. Tested in ELISA, IHC, WB applications. This antibody reacts with Human.
Application	ELISA, IF, IHC, WB
Clonality	Polyclonal
Formulation	Liquid in PBS containing 50% glycerol, 0.5% stabilizing protein and 0.02% sodium azide. This antibody is supplied in a stabilized formulation. Compatibility with conjugation reactions depends on the chemistry of the conjugation method used. For conjugation methods that are not compatible with the stabilizing components present in this formulation, a carrier-free antibody format is required.
Storage Instructions	Store at -20°C for one year. For short term storage and frequent use, store at 4°C for up to one month. Avoid repeated freeze-thaw cycles.
Host	Rabbit
Uniprot ID	Q8N137

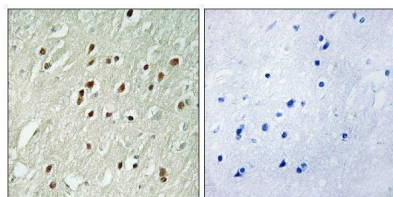
Technical Details

Immunogen	The antiserum was produced against synthesized peptide derived from human CNTROB. AA range:591-640
Isotype	IgG
Form	Liquid
Concentration	1 mg/ml
Purification	The antibody was affinity-purified from rabbit antiserum by affinity-chromatography using epitope-specific immunogen.
Suggested Dilutions	WB 1:500-1:2000 IHC 1:100-1:300 ELISA 1:5000 IF 1:50-200

Anti-Centrobins CNTROB Antibody (A08210-1) Images



Western Blot analysis of various cells using Centrobins Polyclonal Antibody



Immunohistochemistry analysis of paraffin-embedded human brain, using CNTROB Antibody. The picture on the right is blocked with the synthesized peptide.

Submit a product review to Biocompare.com

Submit a review of this product to Biocompare.com to receive a \$20 Amazon.com giftcard! Your reviews help your fellow scientists make the right decisions. Thank you for your contribution.



Anti-Centrobins CNTROB Antibody

For Research Use Only. Not for use in diagnostic procedures.