

Anti-TFCP2L1 Antibody

Catalog Number: A08278

About TFCP2L1

The Transcription factor CP2-like protein 1 (TFCP2L1) is related to the ubiquitously expressed CP2 family of transcription factors that are generally transcription factors. TFCP2L1 is expressed in a developmentally regulated fashion during embryogenesis and in the epithelial lining of distal convoluted tubules in embryonic and adult kidneys. Recent studies have shown that TFCP2L1 is part of an Oct4-centered protein interaction network in embryonic stem cells. It is thought to modulate the activity of other CP2 family members in a cell specific manner, and is itself regulated by sumoylation at a single major site.

Overview

Product Name	Anti-TFCP2L1 Antibody
Reactive Species	Human, Mouse, Rat
Description	Boster Bio Anti-TFCP2L1 Antibody (Catalog # A08278). Tested in ELISA, WB, IHC-P, IF applications. This antibody reacts with Human, Mouse, Rat.
Application	ELISA, IF, IHC-P, WB
Clonality	Polyclonal
Formulation	TFCP2L1 Antibody is supplied in PBS containing 0.02% sodium azide.
Storage Instructions	TFCP2L1 antibody can be stored at 4°C for three months and -20°C, stable for up to one year. Avoid repeated freeze-thaw cycles. Antibodies should not be exposed to prolonged high temperatures.
Host	Rabbit
Uniprot ID	Q9NZI6

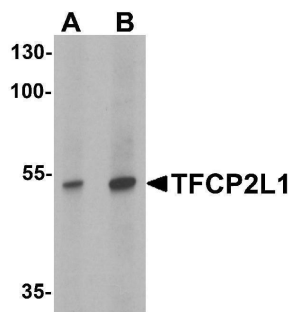
Technical Details

Immunogen	TFCP2L1 antibody was raised against a 15 amino acid synthetic peptide near the amino terminus of human TFCP2L1. The immunogen is located within the first 50 amino acids of TFCP2L1.
Predicted Reactive Species	Bovine
Isotype	IgG
Form	Liquid
Concentration	1 mg/mL
Purification	TFCP2L1 Antibody is affinity chromatography purified via peptide column.
Suggested Dilutions	TFCP2L1 antibody can be used for detection of TFCP2L1 by Western blot at 1 - 2 ug/mL. Antibody can also be used for immunohistochemistry starting at 2.5 ug/mL. For immunofluorescence start at

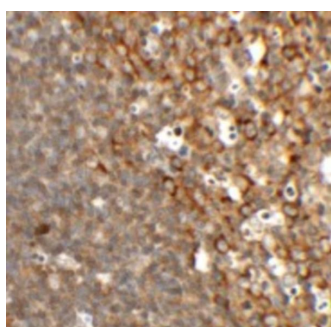
2.5 ug/mL.

Antibody validated: Western Blot in human samples; Immunohistochemistry in rat samples and Immunofluorescence in rat samples. All other applications and species not yet tested. Optimal dilutions for each application should be determined by the researcher.

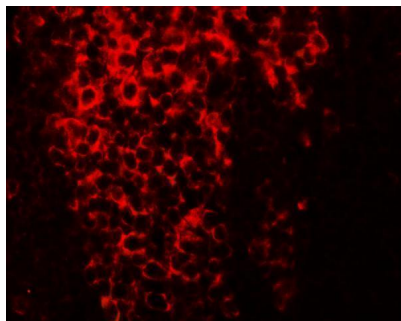
Anti-TFCP2L1 Antibody (A08278) Images



Western blot analysis of TFCP2L1 in human colon tissue lysate with TFCP2L1 antibody at (A) 1 and (B) 2 ug/mL



Immunohistochemistry of TFCP2L1 in rat colon tissue with TFCP2L1 antibody at 2.5 ug/mL.



Immunofluorescence of TFCP2L1 in rat colon tissue with TFCP2L1 antibody at 20 ug/mL.

Submit a product review to [Biocompare.com](https://www.biocompare.com)

Submit a review of this product to [Biocompare.com](https://www.biocompare.com) to receive a \$20 Amazon.com giftcard! Your reviews help your fellow scientists make the right decisions. Thank you for your contribution.



Anti-TFCP2L1 Antibody

For Research Use Only. Not for use in diagnostic procedures.