

Anti-APC5 ANAPC5 Antibody

Catalog Number: A08280-1

About ANAPC5

Cell cycle regulated protein ubiquitination and degradation within subcellular domains is thought to be essential for the normal progression of mitosis. APC5 is a highly conserved component of the anaphase promoting complex/cyclosome (APC/C), a cell cycle-regulated E3 ubiquitin ligase that controls progression through mitosis and the G1 phase of the cell cycle. APC/C is responsible for degrading anaphase inhibitors, mitotic cyclins, and spindle-associated proteins ensuring that events of mitosis take place in proper sequence. The individual APC/C components mRNA and protein levels are expressed at approximately the same levels in most tissues and cell lines, suggesting that they perform their functions as part of a complex. While little is known of APC5, it is thought that APC5 associates with other APC/C components APC1, APC4, and CDC23 interdependently, such that loss of any one subunit reduces binding between the remaining three.

Overview

Product Name	Anti-APC5 ANAPC5 Antibody
Reactive Species	Human, Mouse, Rat
Description	Boster Bio Anti-APC5 ANAPC5 Antibody (Catalog # A08280-1). Tested in ELISA, WB, IHC-P, IF applications. This antibody reacts with Human, Mouse, Rat.
Application	ELISA, IF, IHC-P, WB
Clonality	Polyclonal
Formulation	APC5 Antibody is supplied in PBS containing 0.02% sodium azide.
Storage Instructions	APC5 antibody can be stored at 4°C for three months and -20°C, stable for up to one year. Avoid repeated freeze-thaw cycles. Antibodies should not be exposed to prolonged high temperatures.
Host	Rabbit
Uniprot ID	Q9UJX4

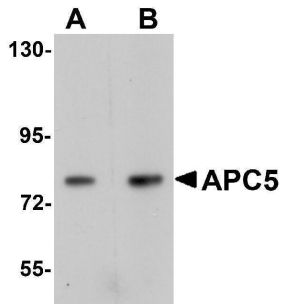
Technical Details

Immunogen	APC5 antibody was raised against a 17 amino acid synthetic peptide near the center of human APC5. The immunogen is located within amino acids 480 - 530 of APC5.
Predicted Reactive Species	Chicken
Isotype	IgG
Form	Liquid
Concentration	1 mg/mL
Purification	APC5 Antibody is affinity chromatography purified via peptide column.

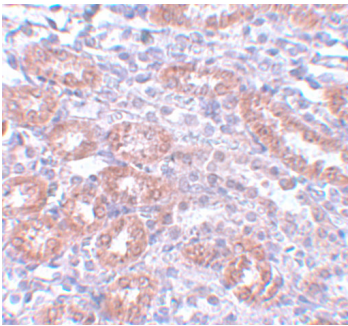
Suggested Dilutions

APC5 antibody can be used for detection of APC5 by Western blot at 1 - 2 ug/mL. Antibody can also be used for immunohistochemistry starting at 5 ug/mL. For immunofluorescence start at 20 ug/mL. Antibody validated: Western Blot in human samples; Immunohistochemistry in rat samples and Immunofluorescence in rat samples. All other applications and species not yet tested. Optimal dilutions for each application should be determined by the researcher.

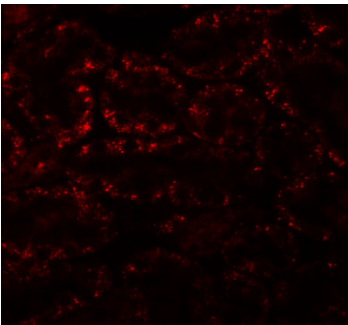
Anti-APC5 ANAPC5 Antibody (A08280-1) Images



Western blot analysis of APC5 in human kidney tissue lysate with APC5 antibody at (A) 1 and (B) 2 ug/mL.



Immunohistochemistry of APC5 in rat kidney tissue with APC5 antibody at 5 ug/mL.



Immunofluorescence of APC5 in rat kidney tissue with APC5 antibody at 20 ug/mL.

Submit a product review to [Biocompare.com](https://www.biocompare.com)

Submit a review of this product to [Biocompare.com](https://www.biocompare.com) to receive a \$20 Amazon.com giftcard! Your reviews help your fellow scientists make the right decisions. Thank you for your contribution.



Anti-APC5 ANAPC5 Antibody

For Research Use Only. Not for use in diagnostic procedures.