

## Anti-Protein FAM3C FAM3C Antibody

Catalog Number: A08282

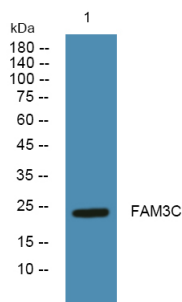
### Overview

|                      |   |
|----------------------|---|
| Product Name         | Anti-Protein FAM3C FAM3C Antibody   |
| Reactive Species     | Human, Mouse, Rat   |
| Description          | Boster Bio Anti-Protein FAM3C FAM3C Antibody catalog # A08282. Tested in WB, ELISA applications. This antibody reacts with Human, Mouse, Rat. |
| Application          | ELISA, WB   |
| Clonality            | Polyclonal  |
| Formulation          | Liquid form in PBS containing 50% glycerol, and 0.02% sodium azide.   |
| Storage Instructions | Store at -20°C for one year. For short term storage and frequent use, store at 4°C for up to one month. Avoid repeated freeze-thaw cycles.    |
| Host                 | Rabbit  |
| Uniprot ID           | Q92520  |

### Technical Details

|                     |   |
|---------------------|---|
| Immunogen           | Synthesized peptide derived from part region of human protein   |
| Isotype             | IgG   |
| Form                | Liquid  |
| Concentration       | 1 mg/ml   |
| Purification        | FAM3C antibody was affinity-purified from rabbit antiserum by affinity-chromatography using epitope-specific immunogen. |
| Suggested Dilutions | WB 1:500-2000<br>ELISA 1:5000-20000   |

## Anti-Protein FAM3C FAM3C Antibody (A08282) Images



Western blot analysis of lysates from SH-SY5Y cells, primary antibody was diluted at 1:1000, 4°over night

### Submit a product review to Biocompare.com

Submit a review of this product to Biocompare.com to receive a \$20 Amazon.com giftcard! Your reviews help your fellow scientists make the right decisions. Thank you for your contribution.



Anti-Protein FAM3C FAM3C Antibody

For Research Use Only. Not for use in diagnostic procedures.