

## Anti-MAP3K10 Antibody

Catalog Number: A08285

### About MAP3K10

Component of the anaphase promoting complex/cyclosome (APC/C), a cell cycle-regulated E3 ubiquitin ligase that controls progression through mitosis and the G1 phase of the cell cycle. The APC/C complex acts by mediating ubiquitination and subsequent degradation of target proteins: it mainly mediates the formation of 'Lys-11'-linked polyubiquitin chains and, to a lower extent, the formation of 'Lys-48'- and 'Lys-63'-linked polyubiquitin chains.

Yu H., Science 279:1219-1222(1998).

Bechtel S., BMC Genomics 8:399-399(2007).

Kraft C., EMBO J. 22:6598-6609(2003).

### Overview

Product Name	Anti-MAP3K10 Antibody
Reactive Species	Human, Mouse, Rat
Description	Boster Bio Anti-MAP3K10 Antibody catalog # A08285. Tested in WB applications. This antibody reacts with Human,Mouse,Rat.
Application	WB
Clonality	Polyclonal
Formulation	Rabbit IgG, 1mg/ml in PBS with 0.02% sodium azide, 50% glycerol, pH7.2
Storage Instructions	Store at -20°C for one year. For short term storage and frequent use, store at 4°C for up to one month. Avoid repeated freeze-thaw cycles.
Host	Rabbit
Uniprot ID	Q02779

### Technical Details

Immunogen	Synthesized peptide derived from internal of human ANAPC5.
Predicted Reactive Species	Chimpanzee, Drosophila, Macaque
Isotype	IgG
Form	Liquid
Concentration	1 mg/ml
Purification	The antibody was affinity-purified from rabbit antiserum by affinity-chromatography using epitope-

specific immunogen and the purity is > 95% (by SDS-PAGE).

**Suggested Dilutions**

Dilute the sample so that the expected range of concentrations fall within the detection range of this kit.

If the expected range of concentration is unknown, a pilot test should be conducted to decide the optimal dilution ratio for your samples.

Some PubMed article(s) citing the expression level of this target are as follows:

Boster Bio's internal QC testing used:

WB: 1:500-1:1000

## Anti-MAP3K10 Antibody (A08285) Images

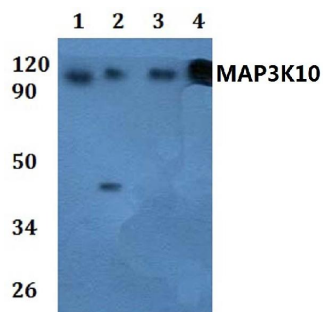


Figure 1. Western blotting validation for Anti-MAP3K10 Antibody A08285

Western blot (WB) analysis of MAP3K10 polyclonal antibody at 1:500 dilution

Lane1:HEK293T whole cell lysate

Lane2:RAW264.7 whole cell lysate

Lane3:H9C2 whole cell lysate

Lane4:HELA whole cell lysate

Electrophoresis was performed on a SDS-PAGE gel. To determine SDS-PAGE gel concentration

## Submit a product review to Biocompare.com

Submit a review of this product to Biocompare.com to receive a \$20 Amazon.com giftcard! Your reviews help your fellow scientists make the right decisions. Thank you for your contribution.



Anti-MAP3K10 Antibody