

## Anti-Setdb2 Antibody

Catalog Number: A08290

### About SETDB2

Setdb2 and the neighboring gene Phf11 were linked to familial atopy/ asthma and are in a "critical region" commonly deleted in CLL. Setdb2 is a candidate histone methyltransferase as a member of the Su(var) 3-9 family of SET domain-containing enzymes. Other predicted domains in Setdb2 include a methylcytosine binding domain and a large bifurcation domain interrupting the putative histone methyltransferase (SET) domain whose function is unknown. Anti-Setdb2 antibody is ideal for researchers interested in Cancer Research and Epigenetics Research.

### Overview

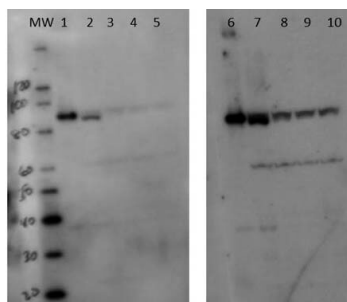
Product Name	Anti-Setdb2 Antibody
Reactive Species	Human, Mouse
Description	Boster Bio Anti-Setdb2 Antibody (Catalog # A08290). Tested in ELISA, WB applications. This antibody reacts with Human, Mouse.
Application	ELISA, WB
Clonality	Polyclonal
Formulation	0.02 M Potassium Phosphate, 0.15 M Sodium Chloride, pH 7.2, 0.01% (w/v) Sodium Azide
Storage Instructions	Store vial at -20°C prior to opening. Aliquot contents and freeze at -20°C or below for extended storage. Avoid cycles of freezing and thawing. Centrifuge product if not completely clear after standing at room temperature. This product is stable for several weeks at 4°C as an undiluted liquid. Dilute only prior to immediate use. Expiration date is one (1) year from date of opening. (Ship on dry ice.)
Host	Rabbit
Uniprot ID	Q8C267

### Technical Details

Immunogen	Setdb2 antibody was prepared from whole rabbit serum produced by repeated immunizations with a full length protein corresponding to mouse Setdb2.
Predicted Reactive Species	Chicken
Cross Reactivity	No cross reactivity with other proteins.
Isotype	IgG
Form	Liquid (sterile filtered)
Concentration	0.98 mg/mL by UV absorbance at 280 nm

Purification	This Protein A purified antibody is directed against mouse Setdb2. The product was purified from monospecific antiserum by Protein A affinity chromatography. Expect reactivity with Setdb2 from mouse and human sources. Reactivity against homologues from other sources is not known.
Suggested Dilutions	ELISA: 1:2,500 - 1:10,000 WB: 1:10,000 - 1:100,000 Anti-Setdb2 antibody has been tested for use in ELISA and western blotting. Specific conditions for reactivity should be optimized by the end user. Expect a band approximately 80.6 kDa in size corresponding to Setdb2 by western blotting in the appropriate cell lysate or extract.

## Anti-Setdb2 Antibody (A08290) Images



Western Blot of Rabbit anti-Setdb2 antibody. Lane 1: 50ng recombinant mouse Setdb2. Lane 2: 50ng recombinant mouse Setdb2 + HEK293 50mcg. Lane 3: 5.0ng recombinant mouse Setdb2 + HEK293 50mcg. Lane 4: 0.5ng recombinant mouse Setdb2 + HEK293 50mcg. Lane 5: HEK293 50mcg. Lane 6: 50ng recombinant mouse Setdb2. Lane 7: 50ng recombinant mouse Setdb2 + HEK293 50mcg. Lane 8: 5.0ng recombinant mouse Setdb2 + HEK293 50mcg. Lane 9: 0.5ng recombinant mouse Setdb2 + HEK293 50mcg. Lane 10: HEK293 50mcg. Primary antibody: Setdb2 antibody at 1:100,000 (lanes 1-5) and 1:25,000 (lanes 6-10) for overnight at 4°C. Secondary antibody: HRP rabbit secondary antibody at 1:20,000 for 45 min at RT. Block: 5% BLOTTO overnight at 4°C. Predicted/Observed size: 80.6 kDa for Setdb2. Other band(s): degradation products, proteolysis products, or nonspecific binding.

### Submit a product review to [Biocompare.com](https://www.biocompare.com)

Submit a review of this product to [Biocompare.com](https://www.biocompare.com) to receive a \$20 Amazon.com giftcard! Your reviews help your fellow scientists make the right decisions. Thank you for your contribution.



### Anti-Setdb2 Antibody

For Research Use Only. Not for use in diagnostic procedures.