

Anti-CLLD8/SETDB2 Picoband® Antibody

Catalog Number: A08290-2

About SETDB2

SET domain bifurcated histone lysine methyltransferase 2 is a protein in humans encoded by the SETDB2 gene. It is mapped to 13q14.2. This gene encodes a member of a family of proteins that contain a methyl-CpG-binding domain (MBD) and a SET domain and function as histone methyltransferases. This protein is recruited to heterochromatin and plays a role in the regulation of chromosome segregation. This region is commonly deleted in chronic lymphocytic leukemia. Naturally-occurring readthrough transcription occurs from this gene to the downstream PHF11 (PHD finger protein 11) gene. Alternative splicing results in multiple transcript variants.

Overview

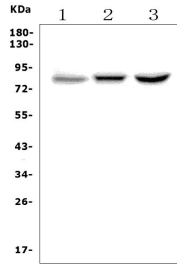
| | |
|----------------------|---|
| Product Name | Anti-CLLD8/SETDB2 Picoband® Antibody |
| Reactive Species | Human, Mouse, Rat |
| Description | Boster Bio Anti-CLLD8/SETDB2 Picoband® Antibody catalog # A08290-2. Tested in Flow Cytometry, WB applications. This antibody reacts with Human, Mouse, Rat. The brand Picoband indicates this is a premium antibody that guarantees superior quality, high affinity, and strong signals with minimal background in Western blot applications. Only our best-performing antibodies are designated as Picoband, ensuring unmatched performance. |
| Application | Flow Cytometry, WB |
| Clonality | Polyclonal |
| Formulation | Each vial contains 4mg Trehalose, 0.9mg NaCl, 0.2mg Na ₂ HPO ₄ , 0.05mg NaN ₃ . |
| Storage Instructions | Store at -20°C for one year from date of receipt. After reconstitution, at 4°C for one month. It can also be aliquotted and stored frozen at -20°C for six months. Avoid repeated freeze-thaw cycles. |
| Host | Rabbit |
| Uniprot ID | Q96T68 |

Technical Details

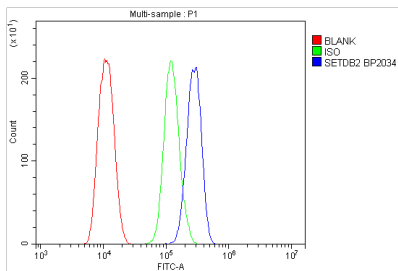
| | |
|-------------------------------|--|
| Immunogen | A synthetic peptide corresponding to a sequence at the C-terminus of human CLLD8/SETDB2, which shares 96.6% and 93.1% amino acid (aa) sequence identity with mouse and rat CLLD8/SETDB2, respectively. |
| Recommended Detection Systems | Boster recommends Enhanced Chemiluminescent Kit with anti-Rabbit IgG (EK1002) for Western blot. |
| Cross Reactivity | No cross-reactivity with other proteins. |
| Isotype | Rabbit IgG |
| Form | Lyophilized |

| | |
|---------------------|--|
| Concentration | Adding 0.2 ml of distilled water will yield a concentration of 500 ug/ml. |
| Purification | Immunogen affinity purified. |
| Suggested Dilutions | Western blot, 0.25-0.5ug/ml, Human, Mouse, Rat Flow Cytometry (Fixed), 1-3ug/1x10 ⁶ cells, Human |

Anti-CLLD8/SETDB2 Picoband® Antibody (A08290-2) Images



Western blot analysis of SETDB2 using anti-SETDB2 antibody (A08290-2). Electrophoresis was performed on a 5-20% SDS-PAGE gel at 70V (Stacking gel) / 90V (Resolving gel) for 2-3 hours. The sample well of each lane was loaded with 50ug of sample under reducing conditions. Lane 1: human THP-1 whole cell lysates, Lane 2: rat liver tissue lysates. After Electrophoresis, proteins were transferred to a Nitrocellulose membrane at 150mA for 50-90 minutes. Blocked the membrane with 5% Non-fat Milk/ TBS for 1.5 hour at RT. The membrane was incubated with rabbit anti-SETDB2 antigen affinity purified polyclonal antibody (Catalog # A08290-2) at 0.5 ug/mL overnight at 4°C, then washed with TBS-0.1%Tween 3 times with 5 minutes each and probed with a goat anti-rabbit IgG-HRP secondary antibody at a dilution of 1:5000 for 1.5 hour at RT. The signal is developed using an Enhanced Chemiluminescent detection (ECL) kit (Catalog # EK1002) with Tanon 5200 system. A specific band was detected for SETDB2 at approximately 82KD. The expected band size for SETDB2 is at 82KD.



Flow Cytometry analysis of THP-1 cells using anti-SETDB2 antibody (A07692-1). Overlay histogram showing THP-1 cells stained with A07692-1 (Blue line). To facilitate intracellular staining, cells were fixed with 4% paraformaldehyde and permeabilized with permeabilization buffer. The cells were blocked with 10% normal goat serum. And then incubated with rabbit anti-SETDB2 Antibody (A07692-1, 1ug/1x10⁶ cells) for 30 min at 20°C. DyLight®488 conjugated goat anti-rabbit IgG (BA1127, 5-10ug/1x10⁶ cells) was used as secondary antibody for 30 minutes at 20°C. Isotype control antibody (Green line) was rabbit IgG (1ug/1x10⁶) used under the same conditions. Unlabelled sample without incubation with primary antibody and secondary antibody (Red line) was used as a blank control.

Submit a product review to Biocompare.com

Submit a review of this product to Biocompare.com to receive a \$20 Amazon.com giftcard! Your reviews help your fellow scientists make the right decisions. Thank you for your contribution.



Anti-CLLD8/SETDB2 Antibody

For Research Use Only. Not for use in diagnostic procedures.