

## Anti-NETO1 Antibody

Catalog Number: A08303

### About NETO1

Neuropilin and tolloid-like protein 1 (NETO1) is involved in the development and/or maintenance of neuronal circuitry. It is a type I transmembrane protein that is expressed in the brain and retina. NETO1 contains one LDL-receptor class A domain and two CUB domains and is either membrane-bound or secreted. It has three alternatively spliced isoforms, the first two of which are retina-specific and the third of which is found in both retina and brain tissue. Furthermore, as an accessory subunit of the neuronal N-methyl-D-aspartate receptor (NMDAR), it regulates long-term NMDA receptor-dependent synaptic plasticity and cognition, at least in the context of spatial learning and memory.

### Overview

Product Name	Anti-NETO1 Antibody
Reactive Species	Human, Mouse, Rat
Description	Boster Bio Anti-NETO1 Antibody (Catalog # A08303). Tested in ELISA, WB, IHC-P, IF applications. This antibody reacts with Human, Mouse, Rat.
Application	ELISA, IF, IHC-P, WB
Clonality	Polyclonal
Formulation	NETO1 Antibody is supplied in PBS containing 0.02% sodium azide.
Storage Instructions	NETO1 antibody can be stored at 4°C for three months and -20°C, stable for up to one year. Avoid repeated freeze-thaw cycles. Antibodies should not be exposed to prolonged high temperatures.
Host	Rabbit
Uniprot ID	Q8TDF5

### Technical Details

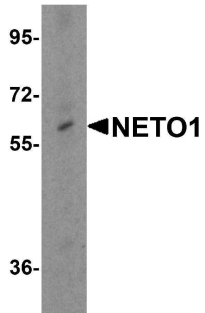
Immunogen	NETO1 antibody was raised against an 18 amino acid synthetic peptide near the carboxy terminus of human NETO1. The immunogen is located within amino acids 350 - 400 of NETO1.
Predicted Reactive Species	Chicken
Cross Reactivity	NETO1 antibody is predicted to not cross-react with other NETO protein family members.
Isotype	IgG
Form	Liquid
Concentration	1 mg/mL
Purification	NETO1 Antibody is affinity chromatography purified via peptide column.

Suggested Dilutions

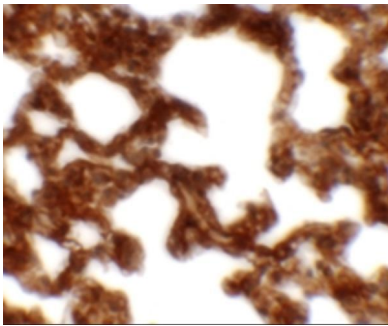
NETO1 antibody can be used for detection of NETO1 by Western blot at 1 - 2 ug/mL. Antibody can also be used for immunohistochemistry starting at 2.5 ug/mL. For immunofluorescence start at 20 ug/mL.

Antibody validated: Western Blot in human samples; Immunohistochemistry in rat samples and Immunofluorescence in rat samples. All other applications and species not yet tested. Optimal dilutions for each application should be determined by the researcher.

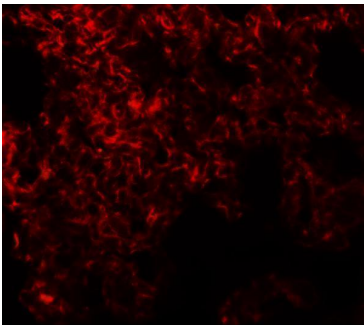
## Anti-NETO1 Antibody (A08303) Images



Western blot analysis of NETO1 in human brain tissue lysate with NETO1 antibody at 0.25 ug/mL.



Immunohistochemistry of NETO1 in rat lung tissue with NETO1 antibody at 2.5 ug/mL.



Immunofluorescence of NETO1 in rat lung tissue with NETO1 antibody at 20 ug/mL.

### Submit a product review to [Biocompare.com](https://www.biocompare.com)

Submit a review of this product to [Biocompare.com](https://www.biocompare.com) to receive a \$20 Amazon.com giftcard! Your reviews help your fellow scientists make the right decisions. Thank you for your contribution.



Anti-NETO1 Antibody

For Research Use Only. Not for use in diagnostic procedures.