

## Anti-ABCB8 Antibody

Catalog Number: A08344

### About ABCB8

This antibody is suitable for Cancer Research and drug resistance. It has been found that ABC transporters are involved in multidrug resistance through their ability to control the presence of drugs in cells. Multidrug resistance is currently being looked at in particular reference to cancer that is resistant to treatment. ABCB8 seems to have particularly high resistance rates in renal cancer and cancer of the central nervous system. Another significant aspect of ABCB8 is that it is a mitochondrial transporter. There are very few ABC transporters localized to the mitochondria which implies information about them could be extremely important. ABCB8 may also be localized to other parts of the cell which are yet to be determined. Anti-ABCB8 antibody is ideal for researchers interested in Cancer Research and drug resistance.

### Overview

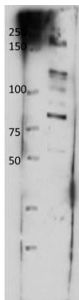
Product Name	Anti-ABCB8 Antibody
Reactive Species	Human
Description	Boster Bio Anti-ABCB8 Antibody (Catalog # A08344). Tested in ELISA, WB applications. This antibody reacts with Human.
Application	ELISA, WB
Clonality	Polyclonal
Formulation	0.02 M Potassium Phosphate, 0.15 M Sodium Chloride, pH 7.2, 0.01% (w/v) Sodium Azide
Storage Instructions	Store vial at -20°C prior to opening. Aliquot contents and freeze at -20°C or below for extended storage. Avoid cycles of freezing and thawing. Centrifuge product if not completely clear after standing at room temperature. This product is stable for several weeks at 4°C as an undiluted liquid. Dilute only prior to immediate use. Expiration date is one (1) year from date of opening. (Ship on dry ice.)
Host	Rabbit
Uniprot ID	Q9NUT2

### Technical Details

Immunogen	ABCB8 was prepared from whole rabbit serum produced by repeated immunizations with a synthetic peptide corresponding to an internal portion of human ABCB8.
Predicted Reactive Species	Bovine, Canine, Equine, Goat, Guinea Pig, Pig, Rabbit
Isotype	IgG
Form	Liquid (sterile filtered)
Concentration	80 mg/mL by Refractometry

Purification	Anti-ABCB8 Antibody was prepared from monospecific, delipidated and defibrinated antiserum, with addition of sodium azide to 0.01%. A BLAST analysis was used to suggest cross-reactivity with ABCB8 from human, mouse, and rat based on a 100% homology with the immunizing sequence. Reactivity against homologues from other sources is not known. The antibody detects ABCB8 in cell lysates.
Suggested Dilutions	ELISA: 1:20,000 - 1:50,000 WB: 1:250-1:500 Anti-ABCB8 antibody has been tested by ELISA and western blotting. Specific conditions for reactivity should be optimized by the end user. Expect band approximately 79.9 kDa in size corresponding to ABCB8 by western blotting in the appropriate cell lysate or extract.

## Anti-ABCB8 Antibody (A08344) Images



Western Blot of Rabbit anti-ABCB8 antibody. Lane 1: Molecular weight marker. Lane 2: B8 crude membrane prep. Load: 10  $\mu$ g per lane. Primary antibody: ABCB8 antibody at 1:500 for overnight at 4°C. Secondary antibody: IRDye800™ rabbit secondary antibody at 1:10,000 for 45 min at RT. Block: 5% BLOTTO overnight at 4°C. Predicted/Observed size: 80 kDa for ABCB8.

## Submit a product review to Biocompare.com

Submit a review of this product to Biocompare.com to receive a \$20 Amazon.com giftcard! Your reviews help your fellow scientists make the right decisions. Thank you for your contribution.



Anti-ABCB8 Antibody

For Research Use Only. Not for use in diagnostic procedures.