

## Anti-CALCB Antibody

Catalog Number: A08354

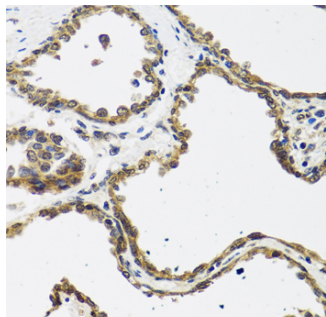
### Overview

Product Name	Anti-CALCB Antibody
Reactive Species	Human
Description	Boster Bio Anti-CALCB Antibody catalog # A08354. Tested in ELISA,IHC,IF,ICC applications. This antibody reacts with Human.
Application	ELISA, IF, IHC, ICC
Clonality	Polyclonal
Formulation	Rabbit IgG, 1mg/ml in PBS with 0.02% sodium azide, 50% glycerol, pH7.2
Storage Instructions	Store at -20°C for one year. For short term storage and frequent use, store at 4°C for up to one month. Avoid repeated freeze-thaw cycles.
Host	Rabbit
Uniprot ID	P10092

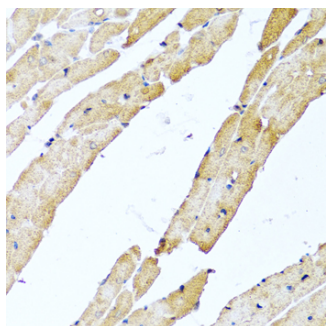
### Technical Details

Immunogen	KLH conjugated synthetic peptide derived from human CALCB
Isotype	IgG
Form	Liquid
Concentration	1 mg/ml
Purification	The antibody was affinity-purified from rabbit antiserum by affinity-chromatography using epitope-specific immunogen and the purity is > 95% (by SDS-PAGE).
Suggested Dilutions	ELISA: 1:5000-1:10000 IHC: 1:100-1:500  IF: 1:100-1:500 ICC: 1:100-1:500

## Anti-CALCB Antibody (A08354) Images



Immunohistochemistry of paraffin-embedded rat heart using CALCB antibody at dilution of 1:100 (40x lens).



Immunohistochemistry of paraffin-embedded human prostate using CALCB antibody at dilution of 1:100 (40x lens).

## Submit a product review to Biocompare.com

Submit a review of this product to Biocompare.com to receive a \$20 Amazon.com giftcard! Your reviews help your fellow scientists make the right decisions. Thank you for your contribution.



Anti-CALCB Antibody

For Research Use Only. Not for use in diagnostic procedures.