

## Anti-GPRASP1 Antibody

Catalog Number: A08358

### About GPRASP1

The G protein-coupled receptor associated sorting protein 1 (GPRASP1) is a member of the GPRASP family and is thought to modulate lysosomal sorting and functional down-regulation of a variety of G-protein coupled receptors (1,2). GPRASP1 interacts with receptors such as the D2 dopamine receptor (DRD2), delta opioid receptor (OPRD1), beta-2 adrenergic receptor (ADRB2), D4 dopamine receptor (DRD4) and cannabinoid 1 receptor (CNR1) and targets these proteins for degradation in lysosomes (2). Recently, it has been shown that increased GPRASP1 levels may act as a potential biomarker for breast cancer (3).

### Overview

|                      |   |
|----------------------|---|
| Product Name         | Anti-GPRASP1 Antibody   |
| Reactive Species     | Human, Mouse  |
| Description          | Boster Bio Anti-GPRASP1 Antibody (Catalog # A08358). Tested in ELISA, WB, IHC-P, IF applications. This antibody reacts with Human, Mouse. |
| Application          | ELISA, IF, IHC-P, WB  |
| Clonality            | Polyclonal  |
| Formulation          | GPRASP1 antibody is supplied in PBS containing 0.02% sodium azide.  |
| Storage Instructions | GPRASP1 antibody can be stored at 4°C for three months and -20°C, stable for up to one year.  |
| Host                 | Rabbit  |
| Uniprot ID           | Q5JY77  |

### Technical Details

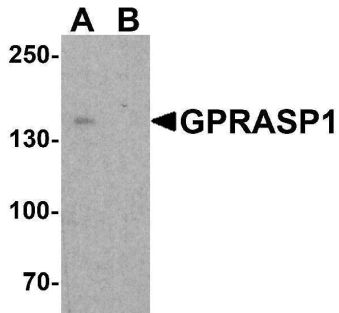
|                            |   |
|----------------------------|---|
| Immunogen                  | GPRASP1 antibody was raised against a 15 amino acid peptide near the amino terminus of human GPRASP1. The immunogen is located within amino acids 260 - 310 of GPRASP1. |
| Predicted Reactive Species | Chicken   |
| Cross Reactivity           | GPRASP1 antibody is human and mouse reactive. This antibody is predicted to not cross-react with GPRASP2.   |
| Isotype                    | IgG   |
| Form                       | Liquid  |
| Concentration              | 1 mg/mL   |
| Purification               | GPRASP1 antibody is affinity chromatography purified via peptide column.  |

Suggested Dilutions

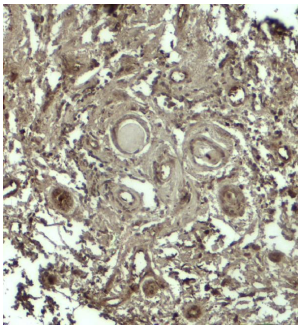
GPRASP1 antibody can be used for detection of GPRASP1 by Western blot at 1 - 2 ug/ml. Antibody can also be used for immunohistochemistry starting at 5 ug/mL. For immunofluorescence start at 20 ug/mL.

Antibody validated: Western Blot in mouse samples; Immunohistochemistry in human samples and Immunofluorescence in human samples. All other applications and species not yet tested. Optimal dilutions for each application should be determined by the researcher.

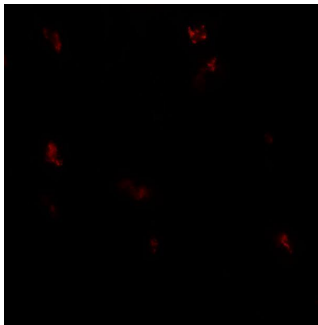
## Anti-GPRASP1 Antibody (A08358) Images



Western blot analysis of GPRASP1 in A-20 cell lysate with GPRASP1 antibody at 1 ug/ml in (A) the absence and (B) the presence of blocking peptide.



Immunohistochemistry of GPRASP1 in human breast carcinoma tissue with GPRASP12 antibody at 5 ug/ml.



Immunofluorescence of GPRASP1 in human breast carcinoma tissue with GPRASP1 antibody at 20 ug/ml.

### Submit a product review to [Biocompare.com](https://www.biocompare.com)

Submit a review of this product to [Biocompare.com](https://www.biocompare.com) to receive a \$20 Amazon.com giftcard! Your reviews help your fellow scientists make the right decisions. Thank you for your contribution.



Anti-GPRASP1 Antibody

For Research Use Only. Not for use in diagnostic procedures.