

Anti-NELF NSMF Antibody

Catalog Number: A08385

About NELF

NELF (nasal embryonic luteinizing hormone-releasing hormone factor) is a 530 amino acid transcription factor involved in the migration of LHRH neurons, outgrowth of olfactory axons and suppression of transcription elongation. NELF is found in the peripheral and central nervous system during embryonic development, and is highly expressed in adult testis, kidney and brain. Known to couple NMDA receptor signaling to the nucleus, NELF knockdown impaired GnRH neuronal migration of NLT cells in vitro and the gene encoding NELF has been linked to the development of Idiopathic hypogonadotropic hypogonadism (IHH), a disorder resulting in impaired pubertal maturation and reproductive function.

Overview

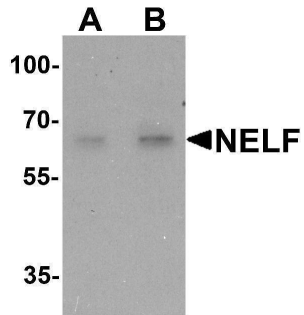
Product Name	Anti-NELF NSMF Antibody
Reactive Species	Human, Mouse, Rat
Description	Boster Bio Anti-NELF NSMF Antibody (Catalog # A08385). Tested in ELISA, WB, IHC-P, IF applications. This antibody reacts with Human, Mouse, Rat.
Application	ELISA, IF, IHC-P, WB
Clonality	Polyclonal
Formulation	NELF Antibody is supplied in PBS containing 0.02% sodium azide.
Storage Instructions	NELF antibody can be stored at 4°C for three months and -20°C, stable for up to one year.
Host	Rabbit
Uniprot ID	Q6X4W1

Technical Details

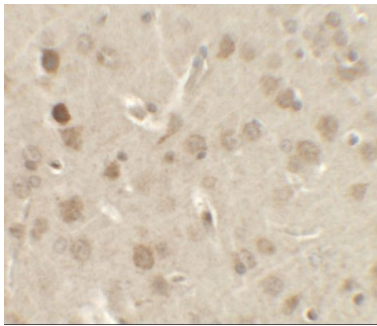
Immunogen	Rabbit polyclonal NELF antibody was raised against a 17 amino acid peptide near the center of human NELF. The immunogen is located within amino acids 230 - 280 of NELF.
Predicted Reactive Species	Chicken
Isotype	IgG
Form	Liquid
Concentration	1 mg/mL
Purification	NELF Antibody is affinity chromatography purified via peptide column.
Suggested Dilutions	NELF antibody can be used for detection of NELF by Western blot at 1 - 2 ug/mL. Antibody can also be used for immunohistochemistry starting at 5 ug/mL. For immunofluorescence start at 20 ug/mL. Antibody validated: Western Blot in human samples; Immunohistochemistry in mouse and rat

samples and Immunofluorescence in mouse and rat samples. All other applications and species not yet tested. Optimal dilutions for each application should be determined by the researcher.

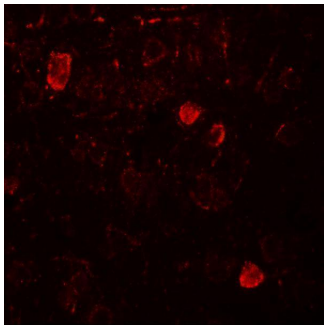
Anti-NELF NSMF Antibody (A08385) Images



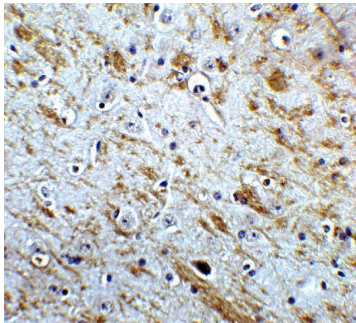
Western blot analysis of NELF in HeLa cell lysate with NELF antibody at (A) 1 and (B) 2 ug/mL.



Immunohistochemistry of NELF in rat brain tissue with NELF antibody at 2.5 ug/ml.

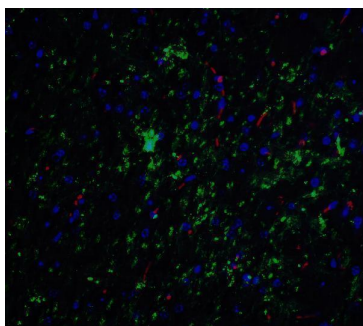


Immunofluorescence of NELF in rat brain tissue with NELF antibody at 20 ug/ml.



Immunohistochemistry of NELF in mouse brain tissue with NELF Antibody at 5 ug/mL.

Immunofluorescence of NELF in mouse brain tissue with NELF Antibody at 20 ug/mL. Green: NELF antibody (A08385) Red: Phylloidin staining Blue: DAPI staining



Submit a product review to Biocompare.com

Submit a review of this product to Biocompare.com to receive a \$20 Amazon.com giftcard! Your reviews help your fellow scientists make the right decisions. Thank you for your contribution.



Anti-NELF NSMF Antibody

For Research Use Only. Not for use in diagnostic procedures.