

Anti-CREBL1 Antibody (C-term)

Catalog Number: A08395-1

About ATF6B

CREBL1 is a transcription factor in the unfolded protein response (UPR) pathway during ER stress. Either as a homodimer or as a heterodimer with ATF6-alpha, the encoded protein binds to the ER stress response element, interacting with nuclear transcription factor Y to activate UPR target genes. The protein is normally found in the membrane of the endoplasmic reticulum; however, under ER stress, the N-terminal cytoplasmic domain is cleaved from the rest of the protein and translocates to the nucleus.

Overview

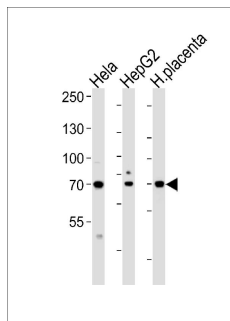
Product Name	Anti-CREBL1 Antibody (C-term)
Reactive Species	Hamster, Human, Mouse
Description	Boster Bio Anti-CREBL1 Antibody (C-term) (Catalog # A08395-1). Tested in IHC-P, WB application(s). This antibody reacts with Human, Hamster, Mouse.
Application	IHC-P, WB
Clonality	Polyclonal
Formulation	Purified polyclonal antibody supplied in PBS with 0.09% (W/V) sodium azide.
Storage Instructions	Maintain refrigerated at 2-8°C for up to 2 weeks. For long-term storage, store at -20°C in small aliquots to prevent freeze-thaw cycles.
Host	Rabbit
Uniprot ID	Q99941

Technical Details

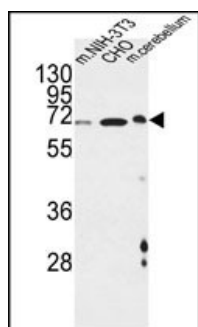
Immunogen	This CREBL1 antibody is generated from rabbits immunized with a KLH conjugated synthetic peptide between 560-589 amino acids from the C-terminal region of human CREBL1.
Predicted Reactive Species	Bovine, Mouse, Rat
Isotype	Rabbit IgG
Purification	This antibody is purified through a protein A column, followed by peptide affinity purification.
Suggested Dilutions	Dilute the sample so that the expected range of concentrations fall within the detection range of this kit. If the expected range of concentration is unknown, a pilot test should be conducted to decide the optimal dilution ratio for your samples. Some PubMed article(s) citing the expression level of this target are as follows: Boster Bio's internal QC testing used: WB: 1:1000

	IHC-P: 1:25
--	-------------

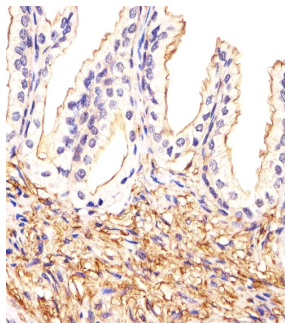
Anti-CREBL1 Antibody (C-term) (A08395-1) Images



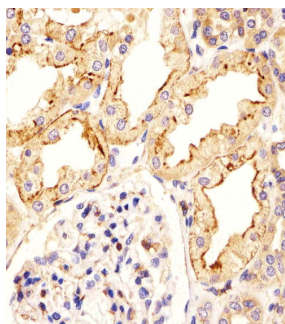
Western blot analysis of lysates from HeLa, HepG2 cell line and human placenta tissue lysate (from left to right), using CREBL1 Antibody (C-term) . A08395-1 was diluted at 1:1000 at each lane. A goat anti-rabbit IgG H&L (HRP) at 1:5000 dilution was used as the secondary antibody. Lysates at 35ug per lane.



CREBL1 Antibody (C-term) (Cat. #A08395-1) western blot analysis in mouse NIH-3T3, CHO cell line and mouse cerebellum tissue lysates (35ug/lane). This demonstrates the CREBL1 antibody detected the CREBL1 protein (arrow).



Immunohistochemical analysis of paraffin-embedded H. prostate section using CREBL1 Antibody (C-term) (Cat#A08395-1). A08395-1 was diluted at 1:25 dilution. A undiluted biotinylated goat polyvalent antibody was used as the secondary, followed by DAB staining.



Immunohistochemical analysis of paraffin-embedded H. kidney section using CREBL1 Antibody (C-term) (Cat#A08395-1). A08395-1 was diluted at 1:25 dilution. A undiluted biotinylated goat polyvalent antibody was used as the secondary, followed by DAB staining.

Submit a product review to Biocompare.com

Submit a review of this product to Biocompare.com to receive a \$20 Amazon.com giftcard! Your reviews help your fellow scientists make the right decisions. Thank you for your contribution.



Anti-CREBL1 Antibody (C-term)