

Anti-CHSS2 CHPF Antibody

Catalog Number: A08402

About CHPF

Has both beta-1,3-glucuronic acid and beta-1,4-N-acetylgalactosamine transferase activity. Transfers glucuronic acid (GlcUA) from UDP-GlcUA and N-acetylgalactosamine (GalNAc) from UDP-GalNAc to the non-reducing end of the elongating chondroitin polymer. Isoform 2 may facilitate PARK2 transport into the mitochondria. In collaboration with PARK2, isoform 2 may enhance cell viability and protect cells from oxidative stress.

Kitagawa H., J. Biol. Chem. 278:23666-23671(2003).

Yada T., J. Biol. Chem. 278:30235-30247(2003).

Clark H.F., Genome Res. 13:2265-2270(2003)

Overview

Product Name	Anti-CHSS2 CHPF Antibody
Reactive Species	Human, Mouse, Rat
Description	Boster Bio Anti-CHSS2 CHPF Antibody (Catalog # A08402). Tested in WB, IHC, IF applications. This antibody reacts with Human, Mouse, Rat.
Application	IF, IHC, WB
Clonality	Polyclonal
Formulation	Rabbit IgG in phosphate buffered saline (without Mg ²⁺ and Ca ²⁺), pH 7.4, 150mM NaCl, 0.02% sodium azide and 50% glycerol.
Storage Instructions	Store at -20°C for one year. For short term storage and frequent use, store at 4°C for up to one month. Avoid repeated freeze-thaw cycles.
Host	Rabbit
Uniprot ID	Q8IZ52

Technical Details

Immunogen	Synthesized peptide derived from internal of human CHSS2.
Predicted Reactive Species	Chimpanzee, Drosophila, Macaque
Isotype	IgG
Form	Liquid
Concentration	1 mg/ml
Purification	The antibody was affinity-purified from rabbit antiserum by affinity-chromatography using epitope-

specific immunogen.

Suggested Dilutions

Dilute the sample so that the expected range of concentrations fall within the detection range of this kit.

If the expected range of concentration is unknown, a pilot test should be conducted to decide the optimal dilution ratio for your samples.

Some PubMed article(s) citing the expression level of this target are as follows:

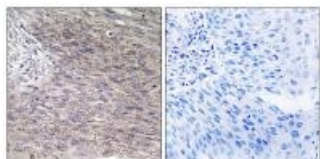
Boster Bio's internal QC testing used:

Western blotting: 1:500~1:3000

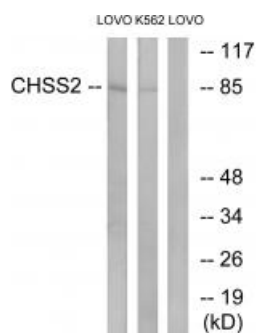
Immunohistochemistry: 1:50~1:100

Immunofluorescence: 1:100~1:500

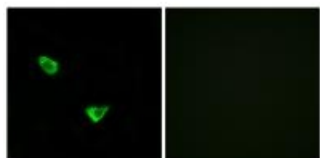
Anti-CHSS2 CHPF Antibody (A08402) Images



Immunohistochemistry analysis of paraffin-embedded human cervix carcinoma tissue using CHSS2 antibody A08402.



Western blot analysis of extracts from LOVO cells and K562 cells, using CHSS2 antibody A08402.



Immunofluorescence analysis of MCF-7 cells, using CHSS2 antibody A08402.

Submit a product review to Biocompare.com

Submit a review of this product to Biocompare.com to receive a \$20 Amazon.com giftcard! Your reviews help your fellow scientists make the right decisions. Thank you for your contribution.



Anti-CHSS2 CHPF Antibody