

Anti-SIRPB1/Cd172B Antibody

Catalog Number: A08437

About SIRPB1

Immunoglobulin-like cell surface receptor involved in the negative regulation of receptor tyrosine kinase-coupled signaling processes. Participates also in the recruitment of tyrosine kinase SYK.

Kharitononkov A., Nature 386:181-186(1997).

Ota T., Nat. Genet. 36:40-45(2004).

Deloukas P., Nature 414:865-871(2001).

Overview

Product Name	Anti-SIRPB1/Cd172B Antibody
Reactive Species	Human
Description	Boster Bio Anti-SIRPB1/Cd172B Antibody (Catalog # A08437). Tested in WB applications. This antibody reacts with Human.
Application	WB
Clonality	Polyclonal
Formulation	Rabbit IgG in phosphate buffered saline (without Mg ²⁺ and Ca ²⁺), pH 7.4, 150mM NaCl, 0.02% sodium azide and 50% glycerol.
Storage Instructions	Store at -20°C for one year. For short term storage and frequent use, store at 4°C for up to one month. Avoid repeated freeze-thaw cycles.
Host	Rabbit
Uniprot ID	O00241

Technical Details

Immunogen	Synthesized peptide derived from internal of human SIRPB1.
Predicted Reactive Species	Chimpanzee, Drosophila, Macaque
Isotype	IgG
Form	Liquid
Concentration	1 mg/ml
Purification	The antibody was affinity-purified from rabbit antiserum by affinity-chromatography using epitope-specific immunogen.

Suggested Dilutions

Dilute the sample so that the expected range of concentrations fall within the detection range of this kit.

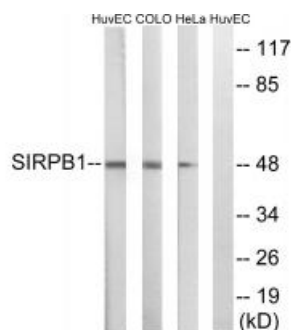
If the expected range of concentration is unknown, a pilot test should be conducted to decide the optimal dilution ratio for your samples.

Some PubMed article(s) citing the expression level of this target are as follows:

Boster Bio's internal QC testing used:

Western blotting: 1:500~1:3000

Anti-SIRPB1/Cd172B Antibody (A08437) Images



Western blot analysis of extracts from HuvEc cells, COLO cells and HeLa cells, using SIRPB1 antibody A08437.

Submit a product review to Biocompare.com

Submit a review of this product to Biocompare.com to receive a \$20 Amazon.com giftcard! Your reviews help your fellow scientists make the right decisions. Thank you for your contribution.



Anti-SIRPB1/Cd172B Antibody