

Anti-CCDC22 Antibody

Catalog Number: A08439

About CCDC22

CCDC22 is a recently identified coiled-coil domain-containing protein that has been shown to bind copines, which are calcium-dependent, membrane-binding proteins that may function in calcium signaling. In rat, CCDC22 has been observed to localize in multiple regions of the brain, including the prefrontal and somatosensory cortex, dentate gyrus and thalamus, and in the ipsilateral motor neurons of the spinal cord after sciatic nerve transection suggesting that it may play a role in neuronal injury response. The human CCDC22 gene has been identified as a novel candidate gene for syndromic X-linked intellectual disability (XLID).

Overview

Product Name	Anti-CCDC22 Antibody
Reactive Species	Human, Mouse, Rat
Description	Boster Bio Anti-CCDC22 Antibody (Catalog # A08439). Tested in ELISA, WB, IF applications. This antibody reacts with Human, Mouse, Rat.
Application	ELISA, IF, WB
Clonality	Polyclonal
Formulation	CCDC22 Antibody is supplied in PBS containing 0.02% sodium azide.
Storage Instructions	CCDC22 antibody can be stored at 4°C for three months and -20°C, stable for up to one year. Avoid repeated freeze-thaw cycles. Antibodies should not be exposed to prolonged high temperatures.
Host	Rabbit
Uniprot ID	O60826

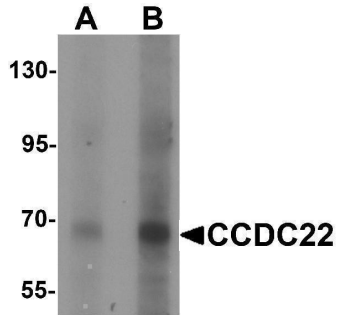
Technical Details

Immunogen	CCDC22 antibody was raised against an 18 amino acid synthetic peptide near the amino terminus of human CCDC22. The immunogen is located within amino acids 530 - 580 of CCDC22.
Predicted Reactive Species	Bovine
Cross Reactivity	At least three isoforms of CCDC22 are known to exist; this antibody will detect the two largest isoforms.
Isotype	IgG
Form	Liquid
Concentration	1 mg/mL
Purification	CCDC22 Antibody is affinity chromatography purified via peptide column.

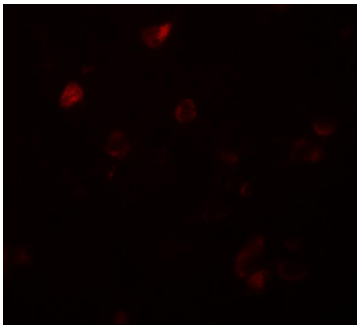
Suggested Dilutions

CCDC22 antibody can be used for detection of CCDC22 by Western blot at 1 - 2 ug/mL. For immunofluorescence start at 20 ug/mL.
Antibody validated: Western Blot in human samples and Immunofluorescence in human samples. All other applications and species not yet tested. Optimal dilutions for each application should be determined by the researcher.

Anti-CCDC22 Antibody (A08439) Images



Western blot analysis of CCDC22 in 293 cell lysate with CCDC22 antibody at (A) 1 and (B) 2 ug/mL.



Immunofluorescence of CCDC22 in human brain tissue with CCDC22 antibody at 20 ug/mL.

Submit a product review to [Biocompare.com](https://www.biocompare.com)

Submit a review of this product to [Biocompare.com](https://www.biocompare.com) to receive a \$20 Amazon.com giftcard! Your reviews help your fellow scientists make the right decisions. Thank you for your contribution.



Anti-CCDC22 Antibody

For Research Use Only. Not for use in diagnostic procedures.