

Anti-GLIPR1 Antibody

Catalog Number: A08471

About GLIPR1

The glioma pathogenesis-related protein 1 (GLIPR1) is similar to both the pathogenesis-related protein (PR) superfamily and the cysteine-rich secretory protein (CRISP) family (1). GLIPR1 is a tumor suppressor whose expression is regulated by p53; its increased expression is associated with myelomocytic differentiation in macrophages, whereas decreased expression of this gene through gene methylation is associated with prostate cancer (2). The GLIPR1 gene is part of a p53 target gene cluster that includes GLIPR1L1 and GLIPR1L2, two highly homologous proteins whose expression patterns vary (3).

Overview

Product Name	Anti-GLIPR1 Antibody
Reactive Species	Human, Mouse
Description	Boster Bio Anti-GLIPR1 Antibody (Catalog # A08471). Tested in ELISA, WB, IF applications. This antibody reacts with Human, Mouse.
Application	ELISA, IF, WB
Clonality	Polyclonal
Formulation	GLIPR1 antibody is supplied in PBS containing 0.02% sodium azide.
Storage Instructions	GLIPR1 antibody can be stored at 4°C for three months and -20°C, stable for up to one year.
Host	Rabbit
Uniprot ID	P48060

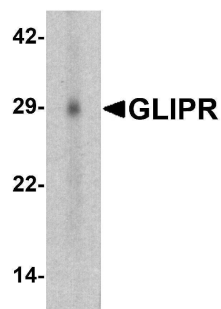
Technical Details

Immunogen	GLIPR1 antibody was raised against an 18 amino acid peptide near the center of human GLIPR1. The immunogen is located within amino acids 60 - 110 of GLIPR1.
Predicted Reactive Species	Bovine
Cross Reactivity	GLIPR1 antibody is human and mouse reactive. At least two isoforms of GLIPR1 are known to exist; this antibody will detect both isoforms. This antibody is predicted to not cross-react with other GLIPR or GLIPR-like proteins.
Isotype	IgG
Form	Liquid
Concentration	1 mg/mL
Purification	GLIPR1 antibody is affinity chromatography purified via peptide column.

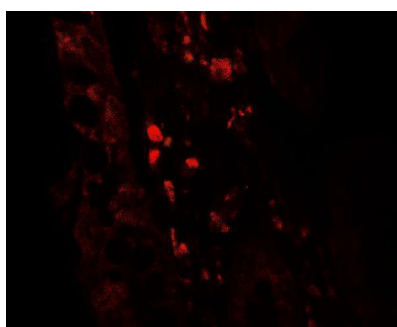
Suggested Dilutions

GLIPR1 antibody can be used for detection of GLIPR1 by Western blot at 1 - 2 ug/ml. For Immunoflorescence start at 5 ug/mL.
Antibody validated: Western Blot in human samples and Immunofluorescence in human samples. All other applications and species not yet tested. Optimal dilutions for each application should be determined by the researcher.

Anti-GLIPR1 Antibody (A08471) Images



Western blot analysis of GLIPR1 in human small intestine tissue lysate with GLIPR1 antibody at 1 ug/ml.



Immunofluorescence of GLIPR1 in human small intestine tissue with GLIPR1 antibody at 5 ug/mL.

Submit a product review to [Biocompare.com](https://www.biocompare.com)

Submit a review of this product to [Biocompare.com](https://www.biocompare.com) to receive a \$20 Amazon.com giftcard! Your reviews help your fellow scientists make the right decisions. Thank you for your contribution.



Anti-GLIPR1 Antibody

For Research Use Only. Not for use in diagnostic procedures.