

Anti-CDR1 Antibody Picoband®

Catalog Number: A08472-1

About CDR1

Cerebellar degeneration-related protein 1 is a protein that in humans is encoded by the CDR1 gene. Autoantibodies directed against the protein encoded by this intronless gene have been found in some patients with paraneoplastic cerebellar degeneration. The encoded protein contains several hexapeptide repeats.

Overview

Product Name	Anti-CDR1 Antibody Picoband®
Reactive Species	Human, Mouse
Description	Boster Bio Anti-CDR1 Antibody Picoband® catalog # A08472-1. Tested in ELISA, WB applications. This antibody reacts with Human, Mouse. The brand Picoband indicates this is a premium antibody that guarantees superior quality, high affinity, and strong signals with minimal background in Western blot applications. Only our best-performing antibodies are designated as Picoband, ensuring unmatched performance.
Application	ELISA, WB
Clonality	Polyclonal
Formulation	Each vial contains 4 mg Trehalose, 0.9 mg NaCl, 0.2 mg Na ₂ HPO ₄ .
Storage Instructions	At -20°C for one year from date of receipt. After reconstitution, at 4°C for one month. It can also be aliquotted and stored frozen at -20°C for six months. Avoid repeated freezing and thawing.
Host	Rabbit
Uniprot ID	P51861

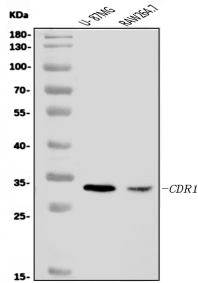
Technical Details

Immunogen	E.coli-derived human CDR1 recombinant protein (Position: M1-R152).
Recommended Detection Systems	Boster recommends Enhanced Chemiluminescent Kit with anti-Rabbit IgG (EK1002) for Western blot.
Cross Reactivity	No cross-reactivity with other proteins.
Isotype	Rabbit IgG
Form	Lyophilized
Concentration	Adding 0.2 ml of distilled water will yield a concentration of 500 ug/ml.
Purification	Immunogen affinity purified.

Suggested Dilutions

Western blot, 0.25-0.5 ug/ml, Human, Mouse
ELISA, 0.1-0.5 ug/ml, -

Anti-CDR1 Antibody Picoband® (A08472-1) Images



Western blot analysis of CDR1 using anti-CDR1 antibody (A08472-1). Electrophoresis was performed on a 5-20% SDS-PAGE gel at 70V (Stacking gel) / 90V (Resolving gel) for 2-3 hours. The sample well of each lane was loaded with 30 ug of sample under reducing conditions. Lane 1: human U-87MG whole cell lysates, Lane 2: mouse RAW264.7 whole cell lysates. After electrophoresis, proteins were transferred to a nitrocellulose membrane at 150 mA for 50-90 minutes. Blocked the membrane with 5% non-fat milk/TBS for 1.5 hour at RT. The membrane was incubated with rabbit anti-CDR1 antigen affinity purified polyclonal antibody (Catalog # A08472-1) at 0.5 ug/mL overnight at 4°C, then washed with TBS-0.1%Tween 3 times with 5 minutes each and probed with a goat anti-rabbit IgG-HRP secondary antibody at a dilution of 1:5000 for 1.5 hour at RT. The signal is developed using an Enhanced Chemiluminescent detection (ECL) kit (Catalog # EK1002) with Tanon 5200 system. A specific band was detected for CDR1 at approximately 31 kDa. The expected band size for CDR1 is at 31 kDa.

Submit a product review to Biocompare.com

Submit a review of this product to Biocompare.com to receive a \$20 Amazon.com giftcard! Your reviews help your fellow scientists make the right decisions. Thank you for your contribution.



Anti-CDR1 Antibody

For Research Use Only. Not for use in diagnostic procedures.