

Anti-PARC CUL9 Antibody

Catalog Number: A08481-1

About CUL9

The continued localization of p53 to the nucleus is essential for its function as a tumor suppressor. PARC, a large, Parkin-like ubiquitin ligase has recently been identified as a cytoplasmic anchor protein in p53-associated protein complexes. In the absence of stress, PARC inactivation results in nuclear localization of p53 and activation of p53-dependent apoptosis, while overexpression of this protein promoted cytoplasmic sequestration of p53. Surprisingly, PARC knockout mice were viable and exhibited no obvious phenotype, suggesting that other proteins, such as the highly related cullin family of E3 ubiquitin ligases, may perform similar functions in the absence of PARC. Additionally, it has been suggested that p53 binding to PARC may serve to control PARC function.

Overview

Product Name	Anti-PARC CUL9 Antibody
Reactive Species	Human, Mouse
Description	Boster Bio Anti-PARC CUL9 Antibody (Catalog # A08481-1). Tested in ELISA, WB, ICC, IF applications. This antibody reacts with Human, Mouse.
Application	ELISA, IF, ICC, WB
Clonality	Polyclonal
Formulation	PARC Antibody is supplied in PBS containing 0.02% sodium azide.
Storage Instructions	PARC antibody can be stored at 4°C for three months and -20°C, stable for up to one year. Avoid repeated freeze-thaw cycles. Antibodies should not be exposed to prolonged high temperatures.
Host	Rabbit
Uniprot ID	Q8IWT3

Technical Details

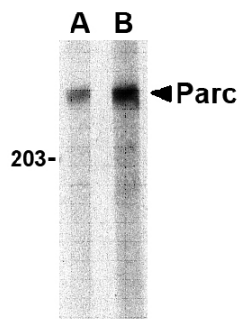
Immunogen	PARC antibody was raised against a 17 amino acid synthetic peptide from near the carboxy terminus of human PARC. The immunogen is located within the last 50 amino acids of PARC.
Predicted Reactive Species	Bovine
Isotype	IgG
Form	Liquid
Concentration	1 mg/mL
Purification	PARC Antibody is affinity chromatography purified via peptide column.

Suggested Dilutions

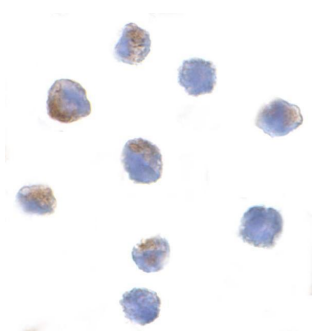
PARC antibody can be used for the detection of PARC by Western blot at 1 - 2 ug/mL. Antibody can also be used for immunocytochemistry starting at 1 ug/mL. For immunofluorescence start at 2 ug/mL.

Antibody validated: Western Blot in human samples; Immunocytochemistry in human samples and Immunofluorescence in human samples. All other applications and species not yet tested. Optimal dilutions for each application should be determined by the researcher.

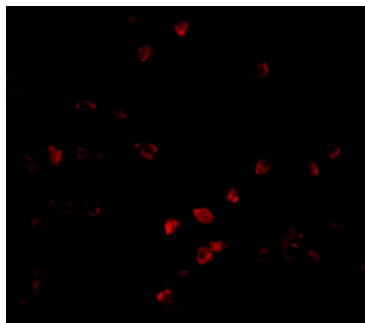
Anti-PARC CUL9 Antibody (A08481-1) Images



Western blot analysis of PARC in Daudi lysate with PARC antibody at (A) 1 and (B) 2 ug/mL.



Immunocytochemistry of Parc in Daudi cells with Parc antibody at 1 ug/mL.



Immunofluorescence of Bcl-G in Daudi cells with Bcl-G antibody at 2 ug/mL.

Submit a product review to [Biocompare.com](https://www.biocompare.com)

Submit a review of this product to [Biocompare.com](https://www.biocompare.com) to receive a \$20 Amazon.com giftcard! Your reviews help your fellow scientists make the right decisions. Thank you for your contribution.



Anti-PARC CUL9 Antibody

For Research Use Only. Not for use in diagnostic procedures.