

## Anti-Myosin-8 MYH8 Antibody

Catalog Number: A08502

### About MYH8

Myosins are actin-based motor proteins that function in the generation of mechanical force in eukaryotic cells (1). MYH8 (myosin, heavy chain 8, skeletal muscle, perinatal) is a member of the class II or conventional myosin heavy chains, and functions in skeletal muscle contraction (2,3). This gene is predominantly expressed in fetal skeletal muscle. MYH8 is regulated by phosphorylation via myosin light chain kinase (MLCK) and by intracellular Ca<sup>2+</sup> concentrations (3). A mutation in this gene results in trismus-pseudocampptodactyly syndrome (4).

### Overview

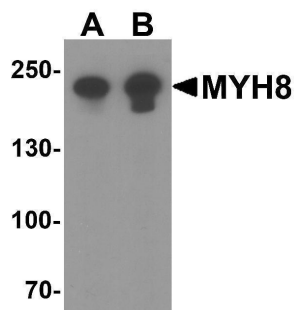
Product Name	Anti-Myosin-8 MYH8 Antibody
Reactive Species	Human, Mouse, Rat
Description	Boster Bio Anti-Myosin-8 MYH8 Antibody (Catalog # A08502). Tested in ELISA, WB, IHC-P, IF applications. This antibody reacts with Human, Mouse, Rat.
Application	ELISA, IF, IHC-P, WB
Clonality	Polyclonal
Formulation	MYH8 antibody is supplied in PBS containing 0.02% sodium azide.
Storage Instructions	MYH8 antibody can be stored at 4°C for three months and -20°C, stable for up to one year.
Host	Rabbit
Uniprot ID	P13535

### Technical Details

Immunogen	MYH8 antibody was raised against a 19 amino acid peptide near the amino terminus of human MYH8. The immunogen is located within amino acids 60 - 110 of MYH8.
Predicted Reactive Species	Bovine, Chicken, Horse, Pig, Rabbit
Cross Reactivity	MYH8 antibody is human, mouse and rat reactive. MYH8 antibody is predicted to not cross-react with other members of the myosin heavy chain family.
Isotype	IgG
Form	Liquid
Concentration	1 mg/mL
Purification	MYH8 antibody is affinity chromatography purified via peptide column.
Suggested Dilutions	MYH8 antibody can be used for detection of MYH8 by Western blot at 1 - 2 ug/ml. Antibody can also

be used for immunohistochemistry starting at 5 ug/mL. For immunofluorescence start at 20 ug/mL. Antibody validated: Western Blot in human samples; Immunohistochemistry in mouse samples and Immunofluorescence in mouse samples. All other applications and species not yet tested. Optimal dilutions for each application should be determined by the researcher.

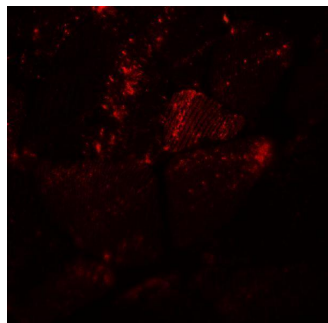
## Anti-Myosin-8 MYH8 Antibody (A08502) Images



Western blot analysis of MYH8 in HeLa cell lysate with MYH8 antibody at (A) 0.5 and (B) 1 ug/ml.



Immunohistochemistry of MYH8 in mouse skeletal muscle tissue with MYH8 antibody at 5 ug/ml.



Immunofluorescence of MYH8 in mouse skeletal muscle tissue with MYH8 antibody at 20 ug/ml.

### Submit a product review to [Biocompare.com](https://www.biocompare.com)

Submit a review of this product to [Biocompare.com](https://www.biocompare.com) to receive a \$20 Amazon.com giftcard! Your reviews help your fellow scientists make the right decisions. Thank you for your contribution.



Anti-Myosin-8 MYH8 Antibody

For Research Use Only. Not for use in diagnostic procedures.