

Anti-MAP1LC3C Antibody

Catalog Number: A08533

About MAP1LC3C

Microtubule-associated proteins (MAPs) regulate microtubule stability and play critical roles in neuronal development and plasticity (1). MAP1LC3C belongs to the MAP1 LC3 family of proteins that form mature complexes with MAP1A and MAP1B which are thought to be important in the formation and development of axons and dendrites (2). MAP1LC3C is one of three isoforms of MAP1LC3, the mammalian homolog of yeast ATG8, an essential autophagy protein. These isoforms exhibit distinct expression patterns and MAP1LC3C, like MAP1LC3A but not MAP1LC3B, is post-translationally modified, suggesting the three isoforms may have different physiological functions (3).

Overview

Product Name	Anti-MAP1LC3C Antibody
Reactive Species	Human
Description	Boster Bio Anti-MAP1LC3C Antibody (Catalog # A08533). Tested in ELISA, WB, IHC-P, IF applications. This antibody reacts with Human.
Application	ELISA, IF, IHC-P, WB
Clonality	Polyclonal
Formulation	MAP1LC3C antibody is supplied in PBS containing 0.02% sodium azide.
Storage Instructions	MAP1LC3C antibody can be stored at 4°C for three months and -20°C, stable for up to one year.
Host	Rabbit
Uniprot ID	Q9BXW4

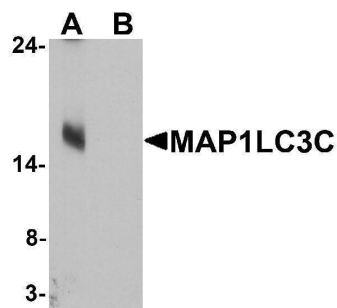
Technical Details

Immunogen	MAP1LC3C antibody was raised against an 18 amino acid peptide near the carboxy terminus of human MAP1LC3C. The immunogen is located within the last 50 amino acids of MAP1LC3C.
Predicted Reactive Species	Bovine
Cross Reactivity	MAP1LC3C antibody is human, mouse and rat reactive. Multiple isoforms MAP1LC3C are known to exist. MAP1LC3C antibody is predicted to not cross-react with MAP1LC3A or MAP1LC3B.
Isotype	IgG
Form	Liquid
Concentration	1 mg/mL
Purification	MAP1LC3C antibody is affinity chromatography purified via peptide column.

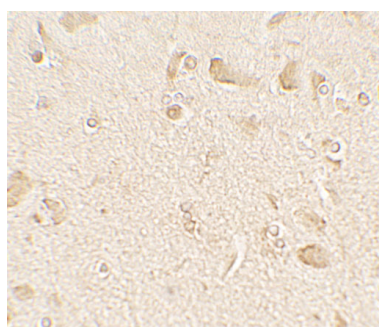
Suggested Dilutions

MAP1LC3C antibody can be used for detection of MAP1LC3C by Western blot at 1 - 2 ug/ml. Antibody can also be used for Immunohistochemistry starting at 5 ug/mL. For immunofluorescence start at 20 ug/mL.
Antibody validated: Western Blot in human samples; Immunohistochemistry in human samples and Immunofluorescence in human samples. All other applications and species not yet tested. Optimal dilutions for each application should be determined by the researcher.

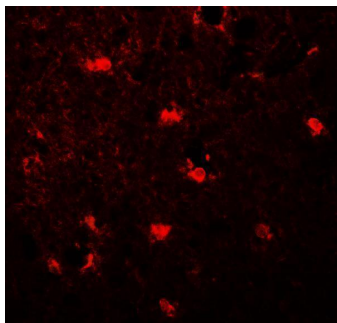
Anti-MAP1LC3C Antibody (A08533) Images



Western blot analysis of MAP1LC3C in human brain tissue lysate with MAP1LC3C antibody at 1 ug/ml in (A) the absence and (B) the presence of blocking peptide.



Immunohistochemistry of MAP1LC3C in human brain tissue with MAP1LC3C antibody at 5 ug/mL.



Immunofluorescence of MAP1LC3C in human brain tissue with MAP1LC3C antibody at 20 ug/mL.

Submit a product review to [Biocompare.com](https://www.biocompare.com)

Submit a review of this product to [Biocompare.com](https://www.biocompare.com) to receive a \$20 Amazon.com giftcard! Your reviews help your fellow scientists make the right decisions. Thank you for your contribution.



Anti-MAP1LC3C Antibody

For Research Use Only. Not for use in diagnostic procedures.