

Anti-Chymotrypsin like protease (CTRL) Rabbit Polyclonal Antibody

Catalog Number: A08534

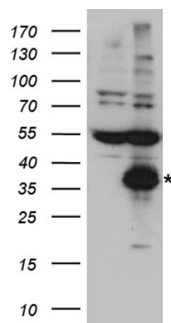
Overview

Product Name	Anti-Chymotrypsin like protease (CTRL) Rabbit Polyclonal Antibody
Reactive Species	Human, Mouse, Rat
Description	Boster Bio Rabbit Polyclonal anti-CTRL Antibody. Catalog# A08534. Tested in WB. This antibody reacts with Human, Mouse, Rat.
Conjugate	Unconjugated
Application	WB
Clonality	Polyclonal
Formulation	PBS with 0.02% sodium azide, 50% glycerol, pH7.3
Storage Instructions	Store at -20°C for one year. For short term storage and frequent use, store at 4°C for up to one month. Avoid repeated freeze-thaw cycles.
Host	Rabbit
Uniprot ID	P40313

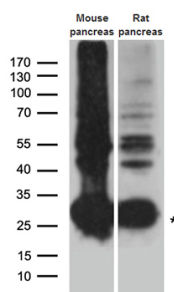
Technical Details

Immunogen	Recombinant protein of human CTRL
Isotype	IgG
Concentration	3.91 mg/ml
Purification	Purified from the immunized serum by affinity chromatography (Protein A/G)
Suggested Dilutions	WB: 1:500~2000

Anti-Chymotrypsin like protease (CTRL) Rabbit Polyclonal Antibody (A08534) Images



HEK293T cells were transfected with the pCMV6-ENTRY control (Left lane) or pCMV6-ENTRY CTRL (Right lane) cDNA for 48 hrs and lysed. Equivalent amounts of cell lysates (5 ug per lane) were separated by SDS-PAGE and immunoblotted with anti-CTRL ra.



Western blot analysis of extracts (35ug) from different cell lines and tissues by using anti-CTRL rabbit polyclonal antibody.

Submit a product review to [Biocompare.com](https://www.biocompare.com)

Submit a review of this product to [Biocompare.com](https://www.biocompare.com) to receive a \$20 Amazon.com giftcard! Your reviews help your fellow scientists make the right decisions. Thank you for your contribution.



Anti-Chymotrypsin like protease (CTRL) Rabbit Polyclonal Antibody

For Research Use Only. Not for use in diagnostic procedures.