

Anti-EMR2 (L160) ADGRE2 Antibody

Catalog Number: A08546-1

About ADGRE2

This is the non-catalytic component of the active enzyme, which catalyzes the hydrolysis of ATP coupled with the exchange of Na⁺ and K⁺ ions across the plasma membrane. The exact function of the beta-3 subunit is not known.

Malik N., J. Biol. Chem. 271:22754-22758(1996).

Malik N., Mamm. Genome 9:136-143(1998).

Zhang H., Nat. Biotechnol. 21:660-666(2003).

Overview

Product Name	Anti-EMR2 (L160) ADGRE2 Antibody
Reactive Species	Human, Mouse, Rat
Description	Boster Bio Anti-EMR2 (L160) ADGRE2 Antibody catalog # A08546-1. Tested in WB,IHC,IF applications. This antibody reacts with Human,Mouse,Rat.
Application	IF, IHC, WB
Clonality	Polyclonal
Formulation	Rabbit IgG, 1mg/ml in PBS with 0.02% sodium azide, 50% glycerol, pH7.2
Storage Instructions	Store at -20°C for one year. For short term storage and frequent use, store at 4°C for up to one month. Avoid repeated freeze-thaw cycles.
Host	Rabbit
Uniprot ID	Q9UHX3

Technical Details

Immunogen	Synthesized peptide derived from human RM27 protein.
Predicted Reactive Species	Chimpanzee, Drosophila, Macaque
Isotype	IgG
Form	Liquid
Concentration	1 mg/ml
Purification	The antibody was affinity-purified from rabbit antiserum by affinity-chromatography using epitope-specific immunogen and the purity is > 95% (by SDS-PAGE).

Suggested Dilutions

Dilute the sample so that the expected range of concentrations fall within the detection range of this kit.

If the expected range of concentration is unknown, a pilot test should be conducted to decide the optimal dilution ratio for your samples.

Some PubMed article(s) citing the expression level of this target are as follows:

Boster Bio's internal QC testing used:

WB: 1:500-1:1000

IHC: 1:50-1:200

IF: 1:50-1:200

Anti-EMR2 (L160) ADGRE2 Antibody (A08546-1) Images

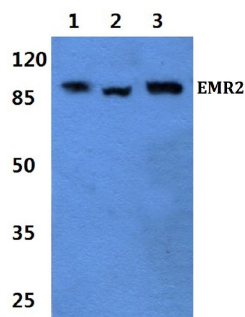


Figure 1. Western blotting validation for Anti-EMR2 (L160) ADGRE2 Antibody A08546-1

Western blot (WB) analysis of EMR2 (L160) pAb at 1:500 dilution

Lane1:K562 whole cell lysate(40ug)

Lane2:U-87MG whole cell lysate(40ug)

Lane3:A549 whole cell lysate(40ug)

Lane4:The Lung tissue lysate of Mouse(40ug)

Lane5:The Lung tissue lysate of Rat(40ug)

Electrophoresis was performed on a SDS-PAGE gel. To determine SDS-PAGE gel concentration

Submit a product review to Biocompare.com

Submit a review of this product to Biocompare.com to receive a \$20 Amazon.com giftcard! Your reviews help your fellow scientists make the right decisions. Thank you for your contribution.



Anti-EMR2 (L160) ADGRE2 Antibody