

## Anti-HELB Antibody Picoband®

Catalog Number: A08560-1

### About HELB

This gene encodes a DNA-dependent ATPase which catalyzes the unwinding of DNA necessary for DNA replication, repair, recombination, and transcription. This gene is thought to function specifically during the S phase entry of the cell cycle. Alternative splicing results in multiple transcript variants.

### Overview

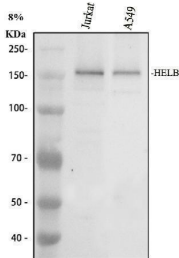
Product Name	Anti-HELB Antibody Picoband®
Reactive Species	Human
Description	Boster Bio Anti-HELB Antibody Picoband® catalog # A08560-1. Tested in WB, ICC/IF, ELISA applications. This antibody reacts with Human. The brand Picoband indicates this is a premium antibody that guarantees superior quality, high affinity, and strong signals with minimal background in Western blot applications. Only our best-performing antibodies are designated as Picoband, ensuring unmatched performance.
Application	ELISA, IF, ICC, WB
Clonality	Polyclonal
Formulation	Each vial contains 4 mg Trehalose, 0.9 mg NaCl, 0.2 mg Na <sub>2</sub> HPO <sub>4</sub> .
Storage Instructions	At -20°C for one year from date of receipt. After reconstitution, at 4°C for one month. It can also be aliquotted and stored frozen at -20°C for six months. Avoid repeated freezing and thawing.
Host	Rabbit
Uniprot ID	Q8NG08

### Technical Details

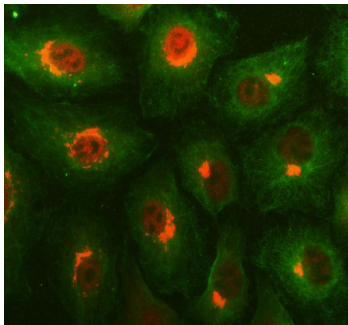
Immunogen	E.coli-derived human HELB recombinant protein (Position: D67-D1026).
Form	Lyophilized
Concentration	Adding 0.2 ml of distilled water will yield a concentration of 500 ug/ml.
Purification	Immunogen affinity purified.
Suggested Dilutions	Western blot, 0.25-0.5 ug/ml, Human Immunocytochemistry/Immunofluorescence, 5 ug/ml, Human ELISA, 0.1-0.5 ug/ml



## Anti-HELB Antibody Picoband® (A08560-1) Images



Western blot analysis of HELB using anti-HELB antibody (A08560-1). Electrophoresis was performed on a 8% SDS-PAGE gel at 80V (Stacking gel) / 120V (Resolving gel) for 2 hours. The sample well of each lane was loaded with 30 ug of sample under reducing conditions. Lane 1: human Hela whole cell lysates. After electrophoresis, proteins were transferred to a nitrocellulose membrane at 150 mA for 50-90 minutes. Blocked the membrane with 5% non-fat milk/TBS for 1.5 hour at RT. The membrane was incubated with rabbit anti-HELB antigen affinity purified polyclonal antibody (A08560-1) at 0.5 ug/mL overnight at 4°C, then washed with TBS-0.1% Tween 3 times with 5 minutes each and probed with a goat anti-rabbit IgG-HRP secondary antibody at a dilution of 1:5000 for 1.5 hour at RT. The signal is developed using an ECL Plus Western Blotting Substrate (Catalog # AR1196-200) with Tanon 5200 system. A specific band was detected for HELB at approximately 150 kDa. The expected band size for HELB is at 123 kDa.



IF analysis of HELB using anti-HELB antibody (A08560-1) and anti-Alpha Tubulin antibody (M03989-3). HELB was detected in an immunocytochemical section of A549 cells. Enzyme antigen retrieval was performed using IHC enzyme antigen retrieval reagent (AR0022) for 15 mins. The cells were blocked with 10% goat serum. And then incubated with 5 ug/mL rabbit anti-HELB Antibody (A08560-1) and mouse anti-Alpha Tubulin antibody (M03989-3) overnight at 4°C. Cy3 Conjugated Goat Anti-Rabbit IgG (BA1032) and Fluoro488 Conjugated Goat Anti-Mouse IgG (BA1126) were used as secondary antibody at 1:500 dilution and incubated for 30 minutes at 37°C. Visualize using a fluorescence microscope and filter sets appropriate for the label used.

### Submit a product review to [Biocompare.com](https://www.biocompare.com)

Submit a review of this product to [Biocompare.com](https://www.biocompare.com) to receive a \$20 Amazon.com giftcard! Your reviews help your fellow scientists make the right decisions. Thank you for your contribution.



Anti-HELB Antibody

For Research Use Only. Not for use in diagnostic procedures.