

## Anti-Junctophilin-1 JPH1 Antibody

Catalog Number: A08565

### About JPH1

Junctional complexes between the plasma membrane (PM) and endoplasmic/sarcoplasmic reticulum (ER/SR) are a common feature of all excitable cell types and mediate cross talk between cell surface and intracellular ion channels. Junctophilins (JPs) are important components of the junctional complexes. JPs are composed of a carboxy-terminal hydrophobic segment spanning the ER/SR membrane and a remaining cytoplasmic domain that shows specific affinity for the PM. Four JPs have been identified as tissue-specific subtypes derived from different genes: JPH1 is expressed in skeletal muscle, JPH2 is detected throughout all muscle cell types, and JPH3 and JPH4 are predominantly expressed in the brain and contribute to the subsurface cistern formation in neurons. JPH1 is essential for stabilizing the T-tubule and SR membranes to form junctions and provide an environment for the assembly of receptors such as the ryanodine receptor type 1 (RyR1).

### Overview

Product Name	Anti-Junctophilin-1 JPH1 Antibody
Reactive Species	Human, Mouse, Rat
Description	Boster Bio Anti-Junctophilin-1 JPH1 Antibody (Catalog # A08565). Tested in ELISA, WB, IHC-P applications. This antibody reacts with Human, Mouse, Rat.
Application	ELISA, IHC-P, WB
Clonality	Polyclonal
Formulation	JPH1 Antibody is supplied in PBS containing 0.02% sodium azide.
Storage Instructions	JPH1 antibody can be stored at 4°C for three months and -20°C, stable for up to one year. Avoid repeated freeze-thaw cycles. Antibodies should not be exposed to prolonged high temperatures.
Host	Rabbit
Uniprot ID	Q9HDC5

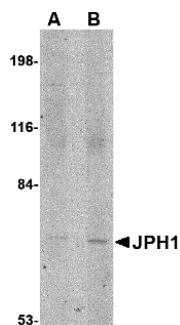
### Technical Details

Immunogen	JPH1 antibody was raised against a 15 amino acid synthetic peptide near the carboxy terminus of human JPH1. The immunogen is located within amino acids 470 - 520 of JPH1.
Predicted Reactive Species	Rabbit
Isotype	IgG
Form	Liquid
Concentration	1 mg/mL
Purification	JPH1 Antibody is affinity chromatography purified via peptide column.

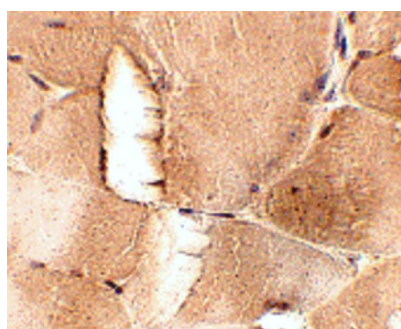
Suggested Dilutions

JPH1 antibody can be used for detection of JPH1 by Western blot at 1 - 2 ug/mL. Antibody can also be used for immunohistochemistry starting at 2.5 ug/mL.  
Antibody validated: Western Blot in human samples and Immunohistochemistry in mouse samples.  
All other applications and species not yet tested. Optimal dilutions for each application should be determined by the researcher.

## Anti-Junctophilin-1 JPH1 Antibody (A08565) Images



Western blot analysis of JPH1 in 293 cell lysate with JPH1 antibody at (A) 1 and (B) 2 ug/mL.



Immunohistochemistry of JPH1 in mouse skeletal muscle tissue with JPH1 antibody at 2.5 ug/mL.

### Submit a product review to [Biocompare.com](https://www.biocompare.com)

Submit a review of this product to [Biocompare.com](https://www.biocompare.com) to receive a \$20 Amazon.com giftcard! Your reviews help your fellow scientists make the right decisions. Thank you for your contribution.



Anti-Junctophilin-1 JPH1 Antibody

For Research Use Only. Not for use in diagnostic procedures.