

Anti-TyrRS YARS Antibody

Catalog Number: A08583

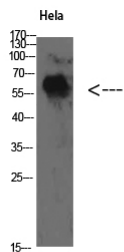
Overview

Product Name	Anti-TyrRS YARS Antibody
Reactive Species	Human, Mouse, Rat
Description	Boster Bio Anti-TyrRS YARS Antibody catalog # A08583. Tested in WB, IHC, ELISA applications. This antibody reacts with Human, Mouse, Rat.
Application	ELISA, IHC, WB
Clonality	Polyclonal
Formulation	Liquid in PBS containing 50% glycerol, 0.5% stabilizing protein and 0.02% sodium azide. This antibody is supplied in a stabilized formulation. Compatibility with conjugation reactions depends on the chemistry of the conjugation method used. For conjugation methods that are not compatible with the stabilizing components present in this formulation, a carrier-free antibody format is required.
Storage Instructions	Store at -20°C for one year. For short term storage and frequent use, store at 4°C for up to one month. Avoid repeated freeze-thaw cycles.
Host	Rabbit
Uniprot ID	P54577

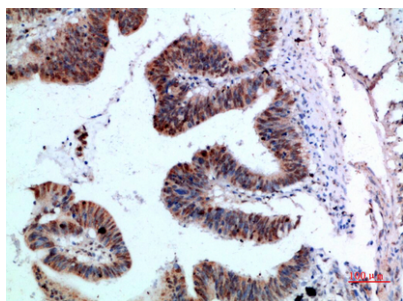
Technical Details

Immunogen	The antiserum was produced against synthesized peptide derived from the C-terminal region of human YARS. AA range:451-500
Cross Reactivity	No cross reactivity with other proteins.
Isotype	IgG
Form	Liquid
Concentration	1 mg/ml
Purification	Immunogen affinity purified
Suggested Dilutions	WB 1:500-2000 IHC 1:50-300 ELISA 1:10000-20000

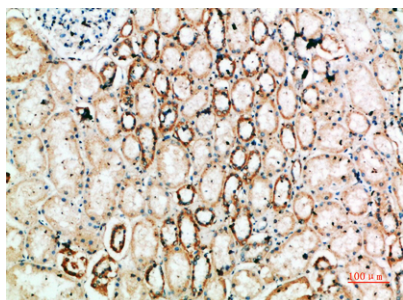
Anti-TyrRS YARS Antibody (A08583) Images



Western Blot analysis of HeLa cells using TyrRS Polyclonal Antibody diluted at 1:500. Secondary antibody was diluted at 1:20000



Immunohistochemical analysis of paraffin-embedded human-colon-cancer, antibody was diluted at 1:200



Immunohistochemical analysis of paraffin-embedded human-kidney, antibody was diluted at 1:200

Submit a product review to [Biocompare.com](https://www.biocompare.com)

Submit a review of this product to [Biocompare.com](https://www.biocompare.com) to receive a \$20 Amazon.com giftcard! Your reviews help your fellow scientists make the right decisions. Thank you for your contribution.



Anti-TyrRS YARS Antibody

For Research Use Only. Not for use in diagnostic procedures.