

Anti-TEM7 PLXDC1 Antibody

Catalog Number: A08584-1

About PLXDC1

Tumor endothelial marker 7 (TEM7) was identified through serial analysis of gene expression on endothelial cells isolated from human normal and malignant colorectal tissues. Further experiments verified TEM7 was highly expressed in the endothelium of numerous other cancer types including breast, lung and brain tumors. At least four isoforms of TEM7 are known to exist; these include intracellular, secreted, and membrane-bound forms. A homologous protein, TEM7R (also known as PLXDC2), acts as a binding partner to TEM7 and is also abundantly expressed in the endothelium of malignant colorectal cancer but is absent or rare in normal colon mucosa. High expression of TEM7 is associated with metastasis and poor survival of patients with osteogenic sarcoma.

Overview

| | |
|----------------------|---|
| Product Name | Anti-TEM7 PLXDC1 Antibody |
| Reactive Species | Human, Mouse, Rat |
| Description | Boster Bio Anti-TEM7 PLXDC1 Antibody (Catalog # A08584-1). Tested in ELISA, WB, IHC-P, IF applications. This antibody reacts with Human, Mouse, Rat. |
| Application | ELISA, IF, IHC-P, WB |
| Clonality | Polyclonal |
| Formulation | TEM7 Antibody is supplied in PBS containing 0.02% sodium azide. |
| Storage Instructions | TEM7 antibody can be stored at 4°C for three months and -20°C, stable for up to one year. Avoid repeated freeze-thaw cycles. Antibodies should not be exposed to prolonged high temperatures. |
| Host | Rabbit |
| Uniprot ID | Q8IUU5 |

Technical Details

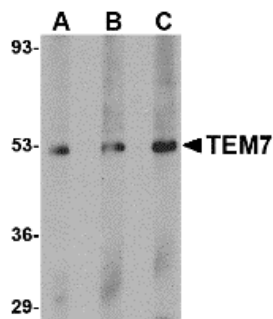
| | |
|----------------------------|---|
| Immunogen | TEM7 antibody was raised against a 16 amino acid synthetic peptide from near the carboxy terminus of human TEM7. The immunogen is located within the last 50 amino acids of TEM7. |
| Predicted Reactive Species | Bovine |
| Isotype | IgG |
| Form | Liquid |
| Concentration | 1 mg/mL |
| Purification | TEM7 Antibody is affinity chromatography purified via peptide column. |

Suggested Dilutions

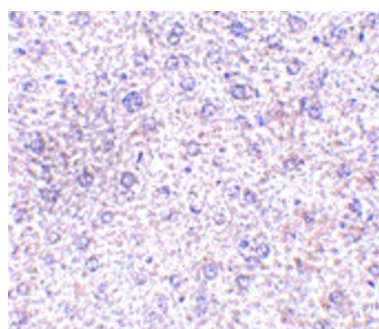
TEM7 antibody can be used for detection of TEM7 by Western blot at 0.5 - 2 ug/mL. Antibody can also be used for immunohistochemistry starting at 2.5 ug/mL. For immunofluorescence start at 20 ug/mL.

Antibody validated: Western Blot in human samples; Immunohistochemistry in mouse samples and Immunofluorescence in mouse samples. All other applications and species not yet tested. Optimal dilutions for each application should be determined by the researcher.

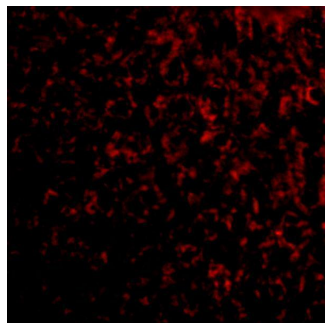
Anti-TEM7 PLXDC1 Antibody (A08584-1) Images



Western blot analysis of TEM7 in human liver tissue lysate with TEM7 antibody at (A) 0.5, (B) 1 and (C) 2 ug/mL.



Immunohistochemistry of TEM7 in mouse liver tissue with TEM7 antibody at 2.5 ug/mL.



Immunofluorescence of TEM7 in mouse liver tissue with TEM7 antibody at 20 ug/mL.

Submit a product review to [Biocompare.com](https://www.biocompare.com)

Submit a review of this product to [Biocompare.com](https://www.biocompare.com) to receive a \$20 Amazon.com giftcard! Your reviews help your fellow scientists make the right decisions. Thank you for your contribution.



Anti-TEM7 PLXDC1 Antibody

For Research Use Only. Not for use in diagnostic procedures.