

## Anti-La-related protein 4 LARP4 Antibody

Catalog Number: A08588

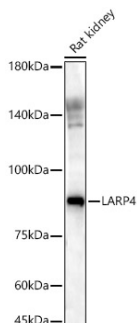
### Overview

Product Name	Anti-La-related protein 4 LARP4 Antibody
Reactive Species	Mouse, Rat
Description	Boster Bio Anti-La-related protein 4 LARP4 Antibody catalog # A08588. Tested in WB,ICC/IF applications. This antibody reacts with Mouse,Rat.
Application	IF, ICC, WB
Clonality	Polyclonal
Formulation	Rabbit IgG, 1mg/ml in PBS with 0.02% sodium azide, 50% glycerol, pH7.2
Storage Instructions	Store at -20°C for one year. For short term storage and frequent use, store at 4°C for up to one month. Avoid repeated freeze-thaw cycles.
Host	Rabbit
Uniprot ID	Q71RC2

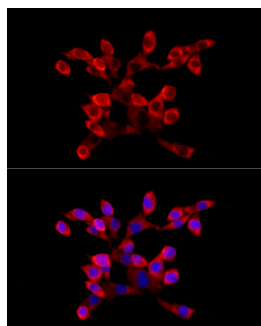
### Technical Details

Immunogen	Recombinant fusion protein of human LARP4(NP_443111.4).
Isotype	IgG
Form	Liquid
Concentration	1 mg/ml
Purification	The antibody was affinity-purified from rabbit antiserum by affinity-chromatography using epitope-specific immunogen and the purity is > 95% (by SDS-PAGE).
Suggested Dilutions	WB: 1:200-1:2000 ICC/IF: 1:50-1:200

## Anti-La-related protein 4 LARP4 Antibody (A08588) Images



Western blot analysis of Rat kidney, using LARP4 antibody at 1:961 dilution. Secondary antibody: HRP Goat Anti-Rabbit IgG at 1:10000 dilution. Lysates/proteins: 25ug per lane. Blocking buffer: 3% nonfat dry milk in TBST. Detection: ECL Basic Kit. Exposure time: 60s.



Immunofluorescence analysis of NIH/3T3 cells using LARP4 Rabbit pAb at dilution of 1:100. Blue: DAPI for nuclear staining.

### Submit a product review to [Biocompare.com](https://www.biocompare.com)

Submit a review of this product to [Biocompare.com](https://www.biocompare.com) to receive a \$20 Amazon.com giftcard! Your reviews help your fellow scientists make the right decisions. Thank you for your contribution.



Anti-La-related protein 4 LARP4 Antibody

For Research Use Only. Not for use in diagnostic procedures.