

## Anti-SR-1E HTR1E Antibody

Catalog Number: A08598

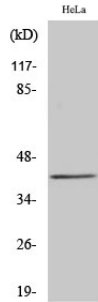
### Overview

Product Name	Anti-SR-1E HTR1E Antibody
Reactive Species	Human
Description	Boster Bio Anti-SR-1E HTR1E Antibody catalog # A08598. Tested in IF, ELISA, IHC applications. This antibody reacts with Human.
Application	ELISA, IF, IHC
Clonality	Polyclonal
Formulation	Liquid in PBS containing 50% glycerol, 0.5% stabilizing protein and 0.02% sodium azide. This antibody is supplied in a stabilized formulation. Compatibility with conjugation reactions depends on the chemistry of the conjugation method used. For conjugation methods that are not compatible with the stabilizing components present in this formulation, a carrier-free antibody format is required.
Storage Instructions	Store at -20°C for one year. For short term storage and frequent use, store at 4°C for up to one month. Avoid repeated freeze-thaw cycles.
Host	Rabbit
Uniprot ID	P28566

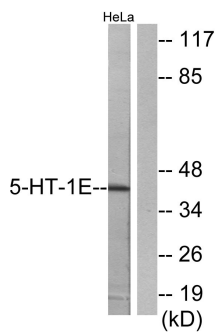
### Technical Details

Immunogen	The antiserum was produced against synthesized peptide derived from human 5-HT-1E. AA range:101-150
Cross Reactivity	No cross reactivity with other proteins.
Isotype	IgG
Form	Liquid
Concentration	1 mg/ml
Purification	Immunogen affinity purified
Suggested Dilutions	IF/ICC 1:50-300 ELISA 1:2000-20000 IHC 1:50-200

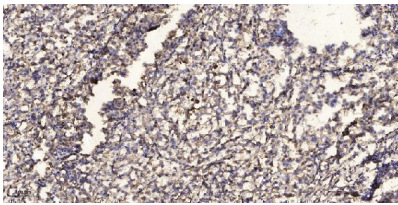
## Anti-SR-1E HTR1E Antibody (A08598) Images



Western Blot analysis of various cells using SR-1E Polyclonal Antibody



Western blot analysis of lysates from HeLa cells, using 5-HT-1E Antibody. The lane on the right is blocked with the synthesized peptide.



Immunohistochemical analysis of paraffin-embedded human Squamous cell carcinoma of lung. 1, Antibody was diluted at 1:200 (4° overnight). 2, Tris-EDTA, pH9.0 was used for antigen retrieval. 3, Secondary antibody was diluted at 1:200 (room temperature, 45min).

### Submit a product review to Biocompare.com

Submit a review of this product to Biocompare.com to receive a \$20 Amazon.com giftcard! Your reviews help your fellow scientists make the right decisions. Thank you for your contribution.



Anti-SR-1E HTR1E Antibody

For Research Use Only. Not for use in diagnostic procedures.