

Anti-Human-AHCTF1 (S1232) Antibody

Catalog Number: A08604

About AHCTF1

Required for the assembly of a functional nuclear pore complex (NPC) on the surface of chromosomes as nuclei form at the end of mitosis. May initiate NPC assembly by binding to chromatin and recruiting the Nup107-160 subcomplex of the NPC. Also required for the localization of the Nup107-160 subcomplex of the NPC to the kinetochore during mitosis and for the completion of cytokinesis.

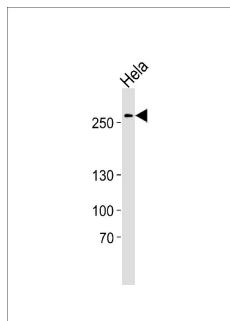
Overview

| | |
|----------------------|--|
| Product Name | Anti-Human-AHCTF1 (S1232) Antibody |
| Reactive Species | Human |
| Description | Boster Bio Anti-Human-AHCTF1 (S1232) Antibody (Catalog # A08604). Tested in WB application(s). This antibody reacts with Human. |
| Application | WB |
| Clonality | Polyclonal |
| Formulation | Purified polyclonal antibody supplied in PBS with 0.09% (W/V) sodium azide. |
| Storage Instructions | Maintain refrigerated at 2-8°C for up to 2 weeks. For long-term storage, store at -20°C in small aliquots to prevent freeze-thaw cycles. |
| Host | Rabbit |
| Uniprot ID | Q8WYP5 |

Technical Details

| | |
|----------------------------|--|
| Immunogen | This antibody is generated from a rabbit immunized with a KLH conjugated synthetic peptide between 1210-1260 amino acids from human. |
| Predicted Reactive Species | Bovine |
| Isotype | Rabbit IgG |
| Purification | This antibody is purified through a protein A column, followed by peptide affinity purification. |
| Suggested Dilutions | Dilute the sample so that the expected range of concentrations fall within the detection range of this kit. If the expected range of concentration is unknown, a pilot test should be conducted to decide the optimal dilution ratio for your samples. Some PubMed article(s) citing the expression level of this target are as follows: Boster Bio's internal QC testing used: WB: 1:1000 |

Anti-Human-AHCTF1 (S1232) Antibody (A08604) Images



Western blot analysis of lysate from Hela cell line, using Phospho-human-AHCTF1 (S1232). ctrl. A08604 was diluted at 1:1000. A goat anti-rabbit IgG H&L (HRP) at 1:5000 dilution was used as the secondary antibody. Lysate at 35ug.

Submit a product review to Biocompare.com

Submit a review of this product to Biocompare.com to receive a \$20 Amazon.com giftcard! Your reviews help your fellow scientists make the right decisions. Thank you for your contribution.



Anti-Human-AHCTF1 (S1232) Antibody