

Anti-Y-box-binding protein 2 YBX2 Antibody

Catalog Number: A08610

About YBX2

Germ cell specific Y-box binding protein (YBX2), a germ-cell-specific member of the Y-box family of DNA-/RNA-binding proteins, is a major constituent of messenger ribonucleoprotein particles (mRNPs) and involved in the regulation of the stability and/or translation of germ cell mRNAs. It is proposed to function as a coactivator of transcription in the nucleus and to stabilize and store maternal and paternal mRNAs in the cytoplasm. YBX2 binds to the Y-box consensus promoter element and is expressed in oocytes and testicular germ cells in the stage of spermatogonia to spermatocyte. Recent studies show that deletion of YBX2 leads to the disruption of both spermatogenesis and oogenesis.

Overview

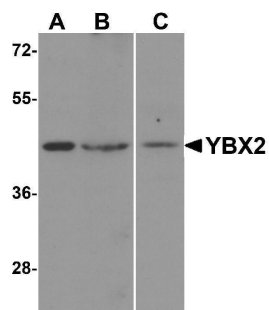
Product Name	Anti-Y-box-binding protein 2 YBX2 Antibody
Reactive Species	Human, Mouse, Rat
Description	Boster Bio Anti-Y-box-binding protein 2 YBX2 Antibody (Catalog # A08610). Tested in ELISA, WB, IHC-P, IF applications. This antibody reacts with Human, Mouse, Rat.
Application	ELISA, IF, IHC-P, WB
Clonality	Polyclonal
Formulation	YBX2 Antibody is supplied in PBS containing 0.02% sodium azide.
Storage Instructions	YBX2 antibody can be stored at 4°C for three months and -20°C, stable for up to one year. Avoid repeated freeze-thaw cycles. Antibodies should not be exposed to prolonged high temperatures.
Host	Rabbit
Uniprot ID	Q9Y2T7

Technical Details

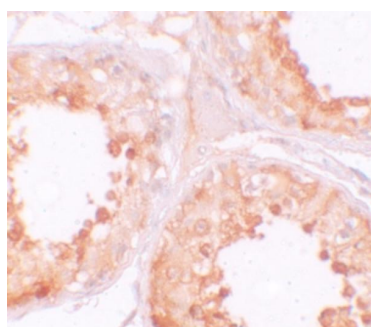
Immunogen	YBX2 antibody was raised against an 18 amino acid synthetic peptide near the carboxy end of human YBX2. The immunogen is located within amino acids 300 - 350 of YBX2.
Predicted Reactive Species	Bovine, Chicken, Pig
Isotype	IgG
Form	Liquid
Concentration	1 mg/mL
Purification	YBX2 Antibody is affinity chromatography purified via peptide column.
Suggested Dilutions	YBX2 antibody can be used for detection of YBX2 by Western blot at 1 - 2 ug/mL. Antibody can also be used for immunohistochemistry starting at 10 ug/mL. For immunofluorescence start at 20 ug/mL.

Antibody validated: Western Blot in human samples; Immunohistochemistry in human samples and Immunofluorescence in human samples. All other applications and species not yet tested. Optimal dilutions for each application should be determined by the researcher.

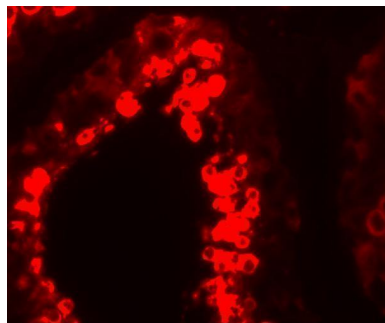
Anti-Y-box-binding protein 2 YBX2 Antibody (A08610) Images



Western blot analysis of YBX2 in human testis tissue lysate with YBX2 antibody at (A) 1 and (B) 2 ug/mL.



Immunohistochemistry of YBX2 in human testis tissue with YBX2 antibody at 10 ug/mL.



Immunofluorescence of YBX2 in human testis tissue with YBX2 antibody at 20 ug/mL.

Submit a product review to [Biocompare.com](https://www.biocompare.com)

Submit a review of this product to [Biocompare.com](https://www.biocompare.com) to receive a \$20 Amazon.com giftcard! Your reviews help your fellow scientists make the right decisions. Thank you for your contribution.



Anti-Y-box-binding protein 2 YBX2 Antibody

For Research Use Only. Not for use in diagnostic procedures.